

NOTICE TO MARINERS

Notice of activities associated with operations on Beatrice Offshore Wind Farm

Date of Issue	10/08/2025	Notice Number	BE-SSE-MAR-SUV-0007
---------------	------------	---------------	---------------------

Contact Details for Marine Coordination and Fisheries Liaison

The following contact can provide more information if required:

Telephone Number (Day Operations)	+44 (0) 2392 272104
Emergency Contact (24/7)	+44 (0) 7342 028207
Email for Marine Coordinator	MC.Bowl@sse.com
Address	Grey Coast Building Harbour Quay WICK Caithness KW1 5ET

For all fisheries enquiries, please contact the parties listed below:

Primary Contact	Alex Winrow-Giffin - alex@brownmay.com +44 (0) 7760 160039
Secondary Contact	John Watt – john.watt@brownmay.com +44 (0) 7590 880746
Address	Brown and May Marine Progress Way Mid Suffolk Business Park Eye, Suffolk IP23 7HU

1. Area of Interest

The area of interest is within the Beatrice Windfarm which is located in the Moray firth on the Smith Bank approximately 10 nm SE of Wick.

Figure 1- Beatrice Wind Farm location in Moray Firth – Bordered in red

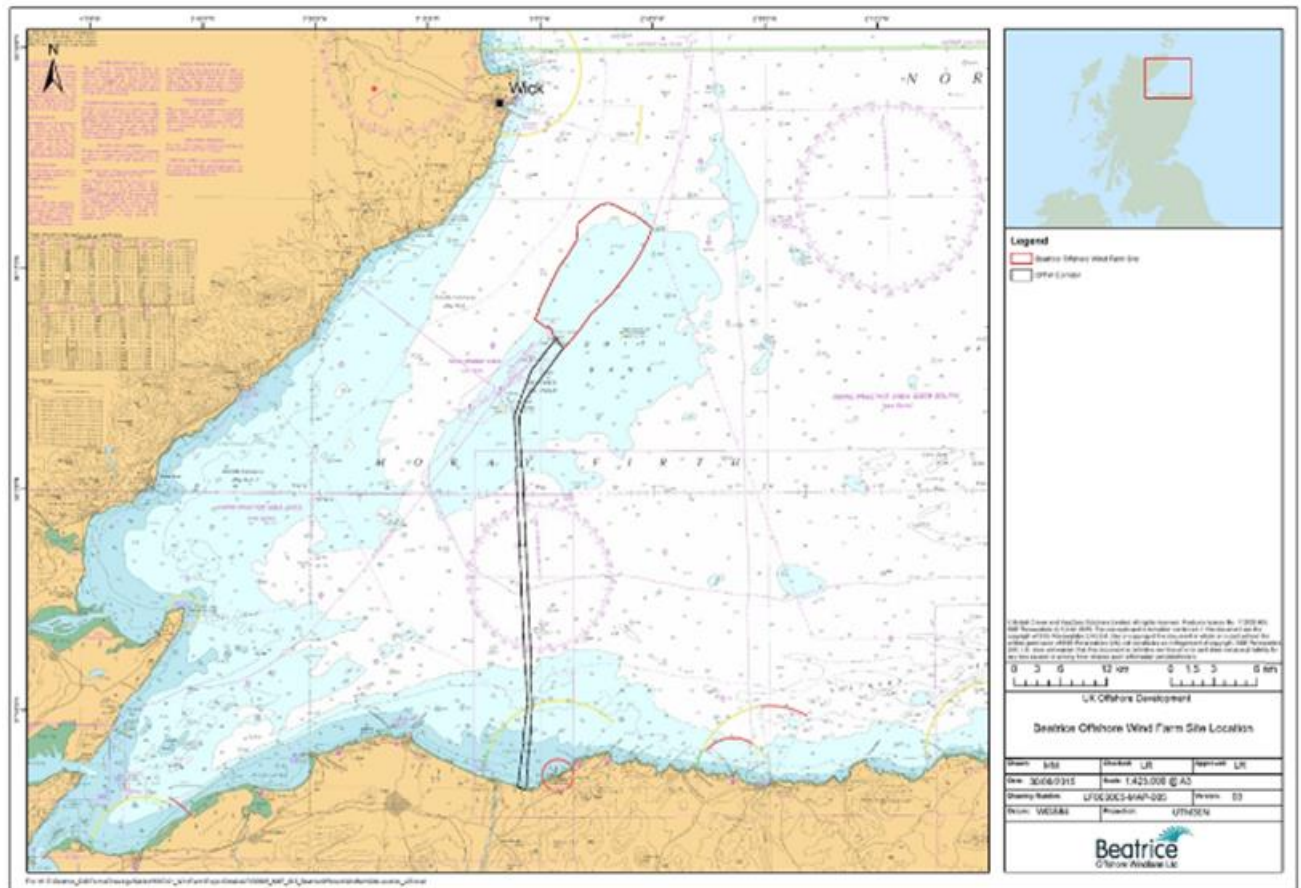


Figure 2- Cable Length Location within windfarm – Marked with Red Arrows.

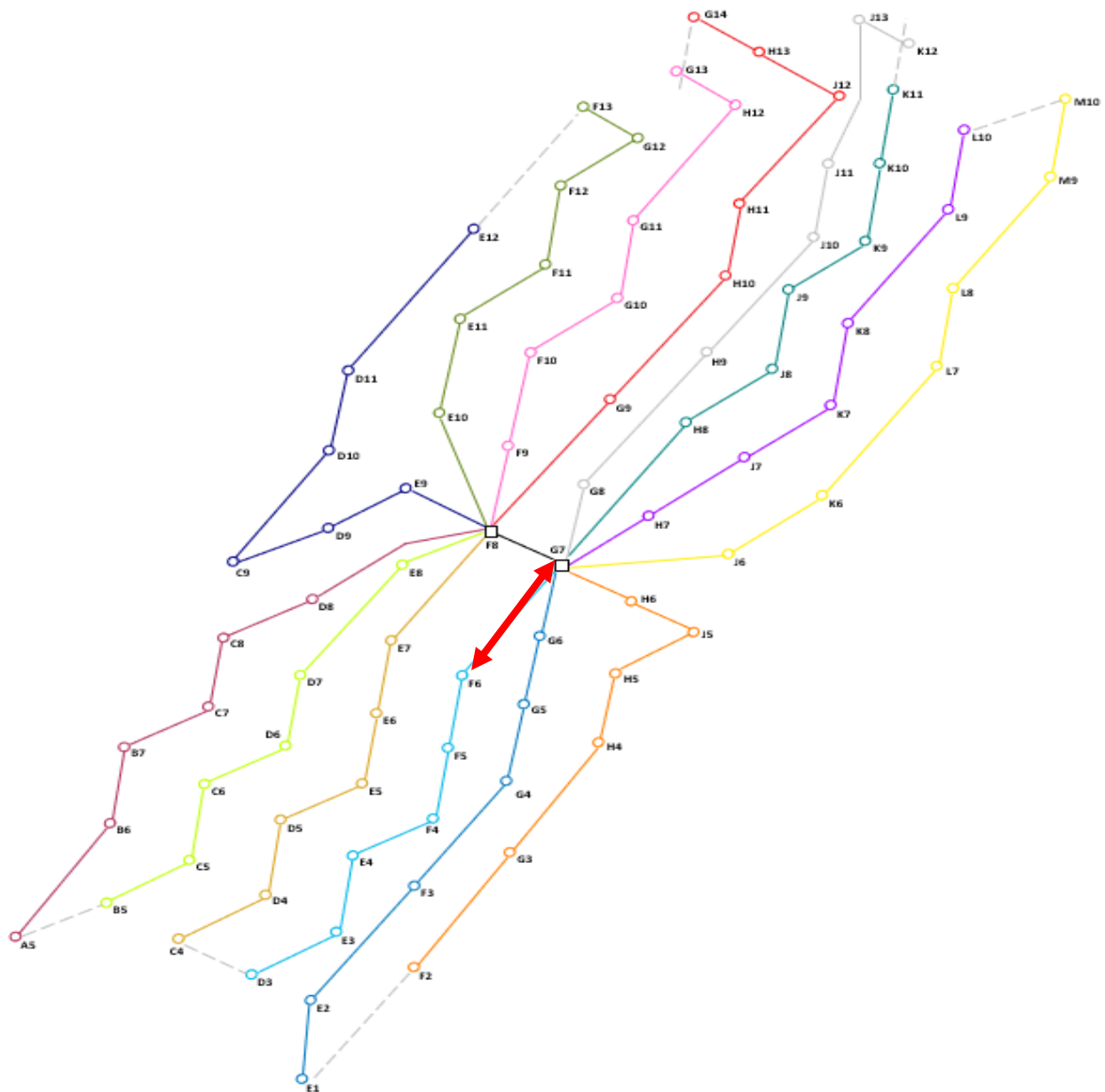


Table 1- F06 & G07 Coordinates

Asset	Latitude	Longitude
BE-F06	58° 14.168' N	002° 54.169' W
BE-G07	58° 15.004' N	002° 52.834' W

1. Activity Description

After a maintenance campaign to replace a subsea inter array cable between assets BE-F06 and BE-G07 within BOWL there is now a section exposed cable situated on the seabed. While the cable is still exposed there will be a guard vessel on site at all times. The vessel will change at times due to operational requirements. Initial vessel details are recorded below.

Vessel associated with this Activity

Guard Vessel Devotion



General Description:	GV Devotion
Operator	SFF
Call Sign:	MRVQ7
MMSI:	235002330
On Board Contact/Offshore Manager:	Sheryl Gove S.Gove@sff.co.uk

	+44 7738643280
Onshore Representative:	Beatrice Offshore Windfarm Grey Coast Building Harbour Quay WICK Caithness, KW1 5ET Iain Taylor iain.taylor@sse.com Tel 07543300788

2. General Safety Advice

ALL VESSELS ARE REQUESTED to give area of exposed cable a wide berth and comply with any requests given by the guard vessel.

MARINERS ARE REMINDED to navigate with caution and keep continued watch on VHF Ch. 70 / 16 when navigating the area.

3. Fisheries Liaison

Fisheries liaison associated with the activity will be co-ordinated by Brown and May Marine.
For any commercial fishery queries please contact:

Alex Winrow-Giffin Tel Mobile +44 (0) 7760 160039 alex@brownmay.com

John Watt Tel Mobile +44 (0) 7590 880746 john.watt@brownmay.com

4. Distribution List

The distribution of this notice is as per email recipient's header. A central list of recipients is maintained by the Marine Coordinator; if you are not the appropriate recipient of these notices, or do not wish to receive the notices in the future, please contact us at the address included in Section 1 of this notice.

A copy of this notice can also be found at <https://www.beatricewind.com/>