

TWP

**THISTLE WIND
PARTNERS**



Notice to Mariners

04/04/24

DSV Curtis Marshall

Overview

Benthic Survey - Array Area/Exported Cable Corridor

Thistle Wind Partners are developing the proposed Ayre (NE2) Offshore Wind Farm.

Please be advised that Ocean Ecology Ltd (OEL), on behalf of Thistle Wind Partners (TWP), is undertaking a benthic survey of the proposed Ayre (NE2) Offshore Wind Farm array area and export cable corridor. The purpose of this Notice to Mariners (NtM) is to outline the working area for the survey vessel, as well as the scope of work. The survey will utilise the vessel DSV Curtis Marshall.

Schedule of Operations - Updated

Survey Dates:	01/03/24 - 19/04/24
Operation:	Benthic Survey
Vessel (s):	DSV Curtis Marshall

Survey Description

Ocean Ecology Ltd (OEL) will be undertaking a benthic characterisation survey inclusive of a drop-down camera assessment, seabed grabs and water sampling. The survey operations do not involve towed survey equipment. The works will be completed by personnel from OEL onboard the vessel DSV Curtis Marshall. Works will be carried out on a continuous basis, 24-hours per day, seven days a week.

General Safety Advice

The vessel will be restricted in their ability to maneuver and will display the appropriate lights and shapes prescribed by the International Regulations for Preventing Collisions at Sea. Other vessels are requested to provide a minimum clearance of 500 m from the survey vessel during marine operations and pass at a safe speed. Regular security messages will be issued on VHF Channel 16 and this Channel will be always monitored by the vessel. The vessel will also transmit regular Automatic Identification System (AIS) messages.

Vessel Details

The vessel that will carry out the survey activities is shown below.



Figure 3: DSV Curtis Marshall Vessel.

Contacts

DSV Curtis Marshall

IMO	235107219
CALL SIGN	SHWN3
VESSEL TELEPHONE NUMBER	+44 1642 843 050
VESSEL CONTACT EMAIL	info@bmarshallmarine.co.uk
ONSHORE CONTACT NUMBER	+44(0) 7969 559 716
ONSHORE CONTACT EMAIL	gary.robinson@ocean-ecology.com

FISHING LIASON OFFICERS (FLOs)

BLACKHALL & POWIS

TOMMY FINN

07787 503119

tommy.finn@blackhallpowis.com

MICHAEL SUTHERLAND

07928 484343

michael.sutherland@blackhallpowis.com

MAIN OFFICE

Blackhall & Powis
Suite 11
The Garment Factory
10 Montrose Street
Glasgow
G1 1RE

Area of Operations

Figure 1: Benthic Survey Area: Ayre (NE2) Exported Cable Corridor

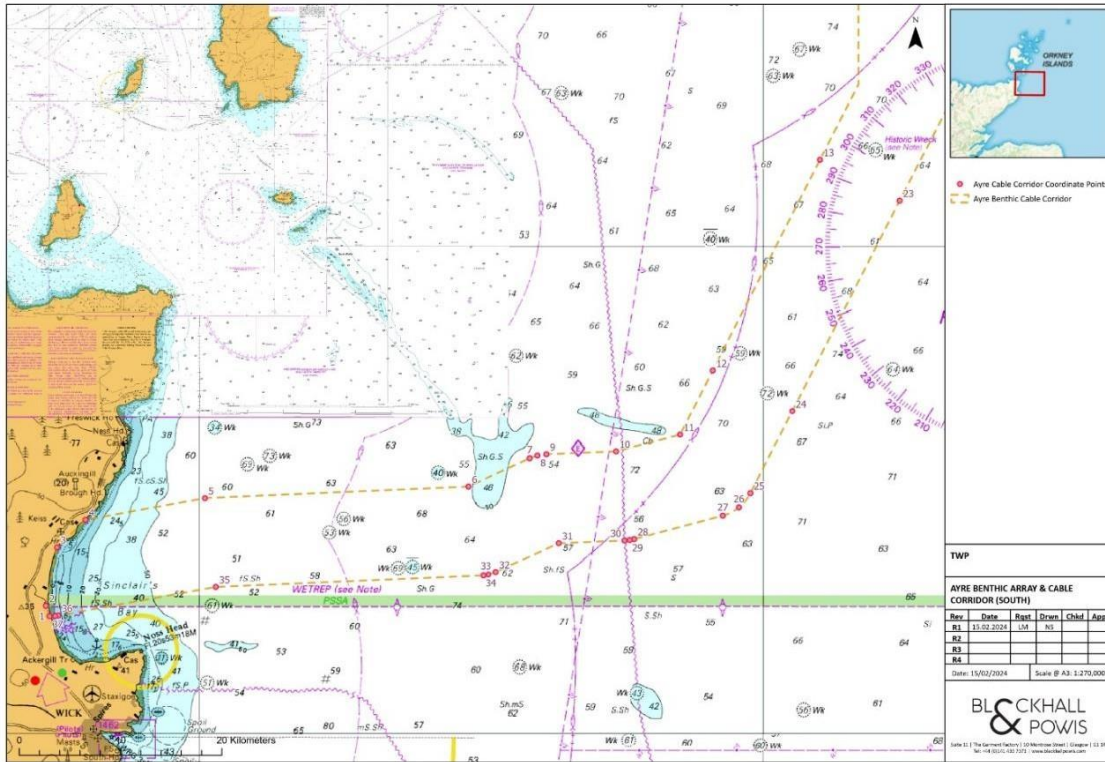


Figure 2: Benthic Survey Area: Ayre (NE2) Array Area

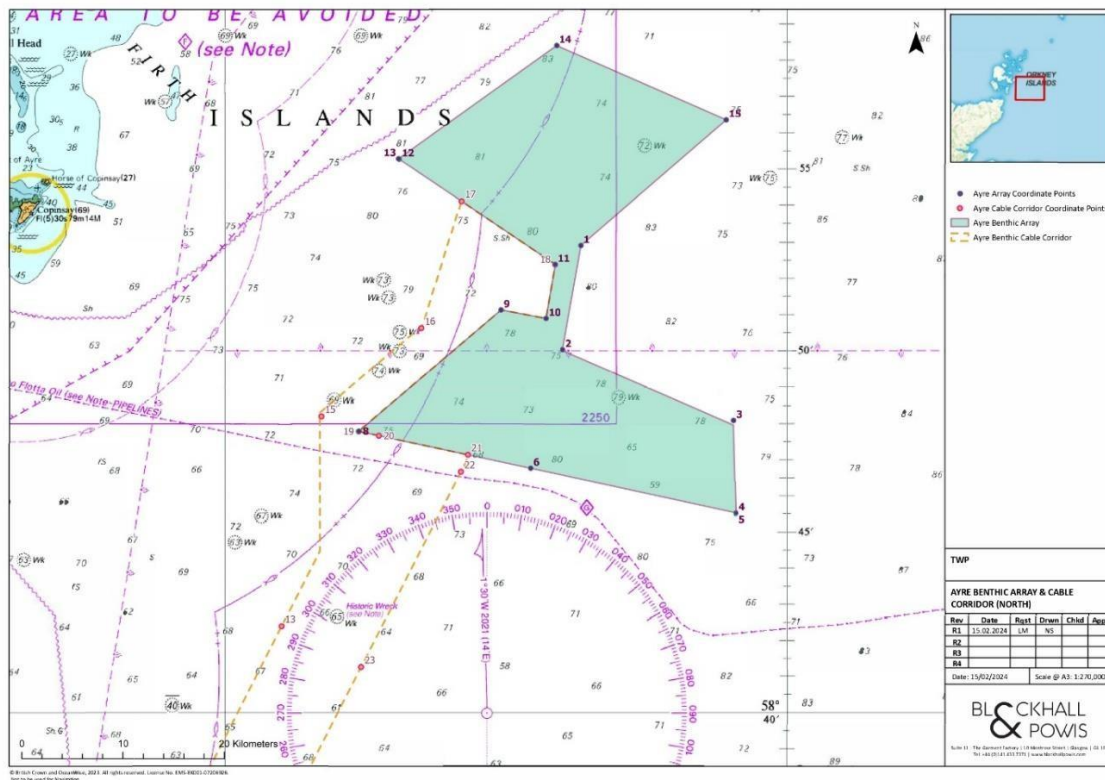


Table 1: Tabulated Coordinates of Area of Operations (Array Area and Export Cable Corridor)

POINT	Easting	Northing	Longitude	Latitude
Array Area				
1	547078.99	6527157.77	58° 52.897' N	2° 11.001' W
2	546198.49	6521814.91	58° 50.024' N	2° 11.983' W
3	555005.19	6518302.78	58° 48.070' N	2° 2.883' W
4	555207.97	6513566.09	58° 45.516' N	2° 2.743' W
5	555207.04	6513554.63	58° 45.510' N	2° 2.744' W
6	544612.86	6515718.07	58° 46.749' N	2° 13.704' W
7	535768.66	6517514.37	58° 47.767' N	2° 22.864' W
8	535777.4	6517522.36	58° 47.771' N	2° 22.855' W
9	543000.17	6523810.63	58° 51.119' N	2° 15.284' W
10	545312.4	6523401.62	58° 50.885' N	2° 12.885' W
11	545755.05	6526174.73	58° 52.376' N	2° 12.391' W

12	537695.35	6531459.77	58° 55.271' N	2° 20.722' W
13	537669.11	6531477.18	58° 55.280' N	2° 20.750' W
14	545698.62	6537344.49	58° 58.395' N	2° 12.311' W
15	554434.97	6533663.12	58° 56.350' N	2° 3.250' W
Exported Cable Corridor				
1	492255.87	6483894.11	58° 29.735' N	3° 7.971' W
2	492069.64	6484429.49	58° 30.023' N	3° 8.164' W
3	492651.01	6487440.81	58° 31.646' N	3° 7.571' W
4	494120.88	6488856.5	58° 32.411' N	3° 6.059' W
5	500288.79	6489964.41	58° 33.010' N	2° 59.702' W
6	513875.65	6490586.6	58° 33.332' N	2° 45.693' W
7	517048.26	6492056.44	58° 34.117' N	2° 42.415' W
8	517447.00	6492198.25	58° 34.193' N	2° 42.003' W

9	517911.25	6492267.16	58° 34.229' N	2° 41.524' W
10	521495.69	6492429.1	58° 34.306' N	2° 37.826' W
11	524790.66	6493318.81	58° 34.775' N	2° 34.421' W
12	526450.27	6496632.89	58° 36.555' N	2° 32.686' W
13	531886.5	6507488.71	58° 42.383' N	2° 26.980' W
14	536801.77	6517304.57	58° 47.648' N	2° 21.794' W
15	533841.83	6518268.86	58° 48.182' N	2° 24.857' W
16	538935.98	6522814.75	58° 50.606' N	2° 19.520' W
17	540915.61	6529344.36	58° 54.113' N	2° 17.390' W
18	545746.36	6526166.87	58° 52.371' N	2° 12.399' W
19	535768.66	6517514.37	58° 47.766' N	2° 22.864' W
20	536805.95	6517308.67	58° 47.648' N	2° 21.793' W
21	541390.79	6516372.5	58° 47.121' N	2° 17.040' W

22	541041.39	6515497.53	58° 46.652' N	2° 17.413' W
23	535999.62	6505429.05	58° 41.254' N	2° 22.741' W
24	530563.36	6494573.17	58° 35.429' N	2° 28.455' W
25	528436.4	6490325.93	58° 33.149' N	2° 30.682' W
26	527849.55	6489593.2	58° 32.756' N	2° 31.292' W
27	527018.8	6489155.99	58° 32.524' N	2° 32.152' W
28	522451.18	6487922.36	58° 31.875' N	2° 36.867' W
29	522221.41	6487872.76	58° 31.849' N	2° 37.104' W
30	521955.42	6487845.18	58° 31.835' N	2° 37.378' W
31	518571.1	6487692.28	58° 31.762' N	2° 40.866' W
32	515319.63	6486187.78	58° 30.959' N	2° 44.222' W
33	514934.05	6486064.99	58° 30.893' N	2° 44.619' W
34	514667.6	6486021.59	58° 30.870' N	2° 44.894' W

35	500848.57	6485393.71	58° 30.547' N	2° 59.126' W
36	492715.01	6483929.46	58° 29.754' N	3° 7.499' W
37	492543.46	6483905.21	58° 29.741' N	3° 7.675' W



TWP

THISTLE WIND
PARTNERS

Contact us

Capital Building
12/3 Andrew Square
EH2 2AF Edinburgh
Scotland, United Kingdom

contact@twp.scot

Follow us at: [@TWPscot](https://www.instagram.com/TWPscot)

