

Notice to Mariners

Site Investigations – Floating LiDAR Deployment & Metocean Survey Campaign – January 2024

Caledonia Offshore Wind Farm

Issue date	26/02/2024
Version	7
Activity	Deployment of two floating LiDAR buoys in the Moray Firth for the acquisition of Wind and Metocean Data for a period of 24 months – COWF-SWLB075 reinstated

Revision History

Version	Issue Date	Status	Updates
1	25/05/2023	Issue	
2	01/06/2023	Update	Amendment to deployment date
3	06/06/2023	Update	Confirmation of as-deployed coordinates
4	05/12/2023	Update	Temporary replacement of COWF-SWLB080 with light beacon buoy during repairs.
5	18/12/2023	Update	COWF-SWLB080 reinstated
6	23/02/2024	Update	Temporary replacement of COWF-SWLB075 with light beacon buoy during repairs.
7	26/02/2024	Update	COWF-SWLB075 reinstated

1. Introduction

This Notice to Mariners is to inform that the Caledonia Offshore Wind Farm will be collecting meteorological and oceanographic climate data from the Caledonia OWF site. The two buoys were deployed on the 3rd of June 2023 (see table 2.1 for as-built coordinates). **On the 18th of December 2023, SECONDARY BUOY (COWF-SWLB075) was reinstated after being temporarily replaced with a light beacon buoy during repairs.** Marine users are advised to maintain a safe clearance distance of 500m from the buoys.

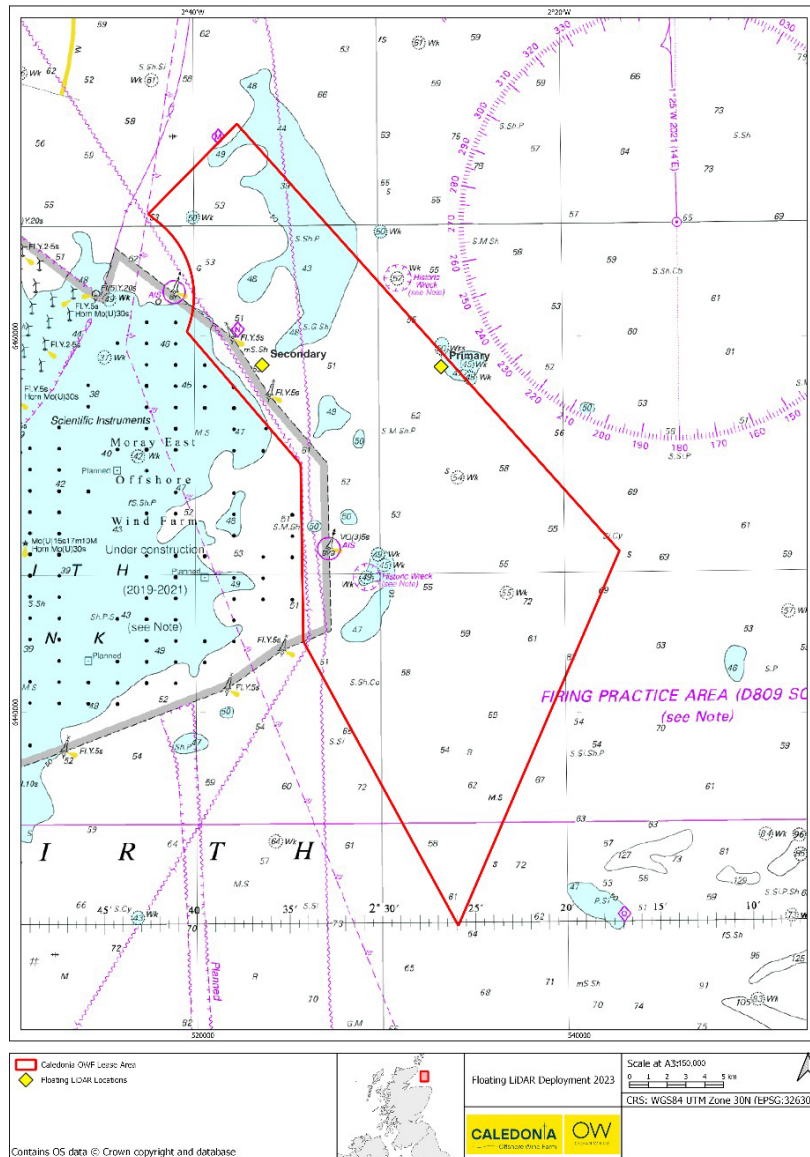


Figure 1 Map of activity

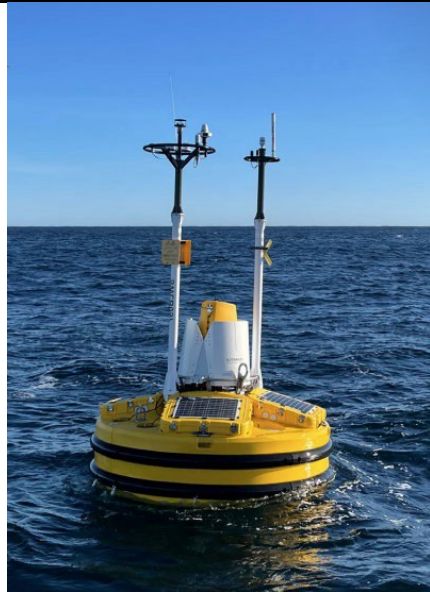
The site is located in the Moray Firth and is approximately 429 km² in size, with the northern limit approximately 22 km from Wick and the southern limit approximately 38 km from Banff.

2. Works Conducted

2.1 Locations

Buoy	AToN Name	Latitude (WGS84 DDM)	Longitude (WGS84 DDM)
Primary	COWF-SWLB080	58° 15.930' N	02° 26.594' W
Secondary	COWF-SWLB075	58° 15.996' N	02° 36.302' W

2.2 Buoy Specification

High level parameters		 <p>Figure 2: Seawatch Wind Lidar Buoy 3.0</p>
Model	Seawatch Wind LiDAR Buoy 3.0	
Buoy Dimensions	Diameter: 2.9 m Height (above waterline): 4.5 m Full height (above & below waterline): 7.4 m Approximate weight: 2500 kg	
Buoy Colour & Shape	Buoy colour: Yellow Buoy shape: See Figure 2.	
Mooring Arrangement	110 m mooring chain, 3 – 4.5 tonne weight Drift radius: 110 – 135m	
Lighting & Markings	Standard SL-07 yellow flash light Range: 1 - 5nm Height of light (above waterline): 3.85 m Topmark: St Andrews Cross (yellow)	
Positioning System	Iridium modem with GPS, with back-up AIS: Chronos Wifi & 4G unit - Sierra RV55	
Power Source:	Battery; 4 x 62 Ah lead acid battery 4 x 272Ah lithium battery	

Marine users are advised to maintain a safe clearance distance of 500m from the buoys.

3. Vessel Information

Deployment activity will be undertaken by the Green Isle.

Vessel Name	Green Isle
Vessel Type	Damen MultiCat 2712
MMSI Number	235108183
IMO Number	9707962
Operating Company	Green Marine (UK) Ltd.
Vessel Call Sign	2IAV3
Vessel Mobile Phone Number	+44 (0)1856851966
Email	info@greenmarineuk.com

Doc. No.: UKCAL-OW-MET-MAR-NTM-00002

Rev: 07

Date: 26/02/2024



4. Developer Contact Details

Enquiries regarding the contents of this Notice to Mariners should be directed to the Caledonia OWF team (contact details below).

For fisheries related matters, please contact the Fisheries Liaison Officer, using the contact details provided below:

Project Manager

Magne Dragne

Email: m.drage@fugro.com

Tel: +47 408 55 665

Consents

Jennifer Stavert

Address: 144 Morrison St., Edinburgh, EH3 8EX

Email: jennifer.stavert@oceanwinds.com

Tel: +44 (0) 7796334639

Company Fisheries Liaison Officer

Alex Winrow-Giffin (Brown and May Marine Ltd)

Address: Progress Way, Mid Suffolk Business Park, Eye, Suffolk, IP23 7HU

Email: alex@brownmay.com

Tel: +44 (0) 7760 160039



Appendix 1 - Coordinates

WGS84 (DD)		WGS84 (DMM)		UTM30	
Latitude	Longitude	Latitude	Longitude	Easting	Northing
Project Boundary					
58.134654	-2.569732	58° 8.080' N	02° 34.184' W	525337.13	6443782.58
58.219111	-2.571085	58° 13.147' N	02° 34.265' W	525197.67	6453185.05
58.282743	-2.673439	58° 16.965' N	02° 40.407' W	519150.3	6460235.99
58.339026	-2.708013	58° 20.342' N	02° 42.48' W	517095.65	6466493.05
58.381835	-2.627196	58° 22.91' N	02° 37.632' W	521801.03	6471282.74
58.176644	-2.283641	58° 10.598' N	02° 17.018' W	542134.17	6448600.53
57.998343	-2.431967	58° 59.9' N	02° 25.918' W	533577.3	6428666.86