

UNIVERSITY OF ABERDEEN

NOTICE TO MARINERS

No. UoA/01/2024

MORAY FIRTH, SCOTLAND

Date of notice: 10th January 2024

For information and enquiries please contact:

Robert Bashford

Lighthouse Field Station,
University of Aberdeen,
George St.,
Cromarty,
IV11 8YL

+44 (0)1381 600548

robert.bashford@abdn.ac.uk

With reference to UoA/04/2023, mariners are advised that the University of Aberdeen intends to recover **52 moorings and equipment** within the **Beatrice, Moray East, Moray West and Caledonia Windfarm** areas, at the locations listed in Table 1 of the current notice and illustrated in Figure 1.

The moorings support acoustic loggers that record echolocation clicks of dolphins and porpoises and broad-band sound recorders (Figure S2) and recovery will be by means of an acoustic release system (Figure S1). Recovery will commence on the 10/01/2024 and is scheduled to be completed by 01/03/2024, subject to weather.

On completion of the recovery of all moorings, a separate Notice to Mariners will be issued.

All works will be carried out by Moray First Marine Ltd., using MV "Waterfall".

Waterfall	
General Description and Dimensions:	Workboat, UK MCA Cat.2, 60nm from safe haven LOA 16m, Beam 6m.
Call sign:	2CBT4
MMSI:	235071392
On Board Contact:	Bill Ruck, 07775 802963
E-mail:	bill@moraymarine.com
	

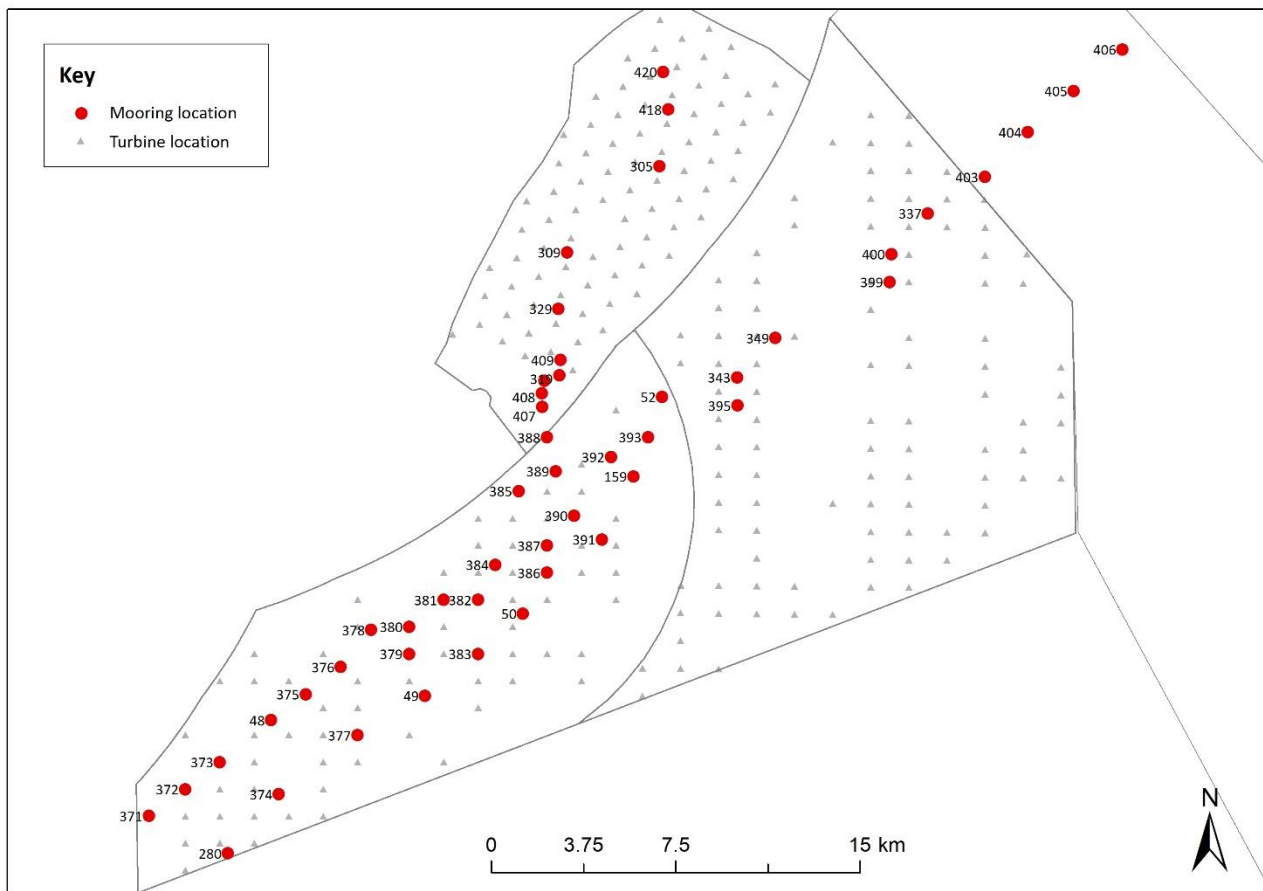
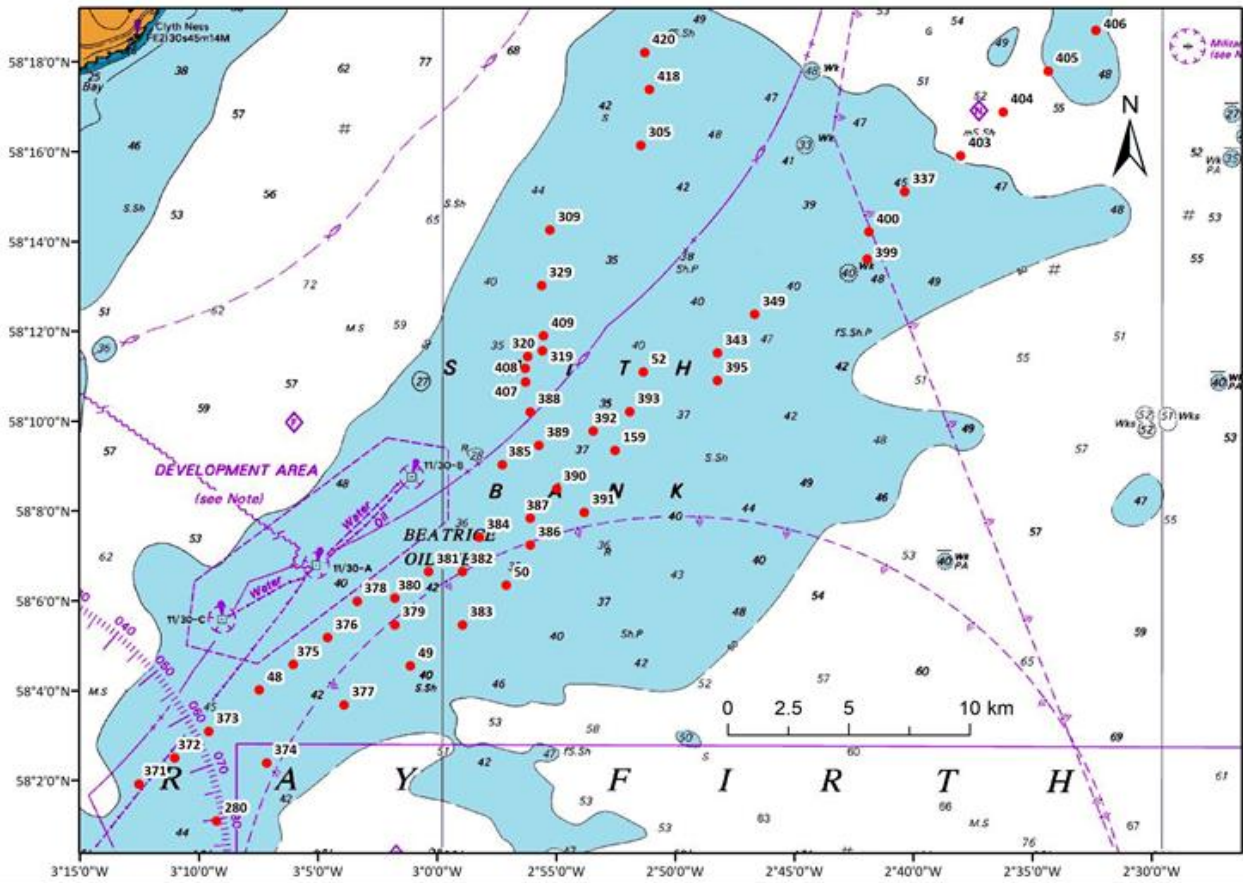


Figure 1 Mooring locations (red dots) noted in this Notice to Mariners. Top panel: showing Smith Bank and adjacent waters; bottom panel: showing windfarm areas and turbine locations.

Table 1 Completed mooring installations.

Name	Coordinates (WGS84 datum)		Windfarm site	Characteristics
305	58° 16.150'N	2° 51.392'W	Beatrice	Subsurface
309	58° 14.269'N	2° 55.237'W	Beatrice	Subsurface
319	58° 11.578'N	2° 55.560'W	Beatrice	Subsurface
320	58° 11.454'N	2° 56.180'W	Beatrice	Subsurface
329	58° 13.036'N	2° 55.596'W	Beatrice	Subsurface
407	58° 10.884'N	2° 56.277'W	Beatrice	Subsurface
408	58° 11.187'N	2° 56.282'W	Beatrice	Subsurface
409	58° 11.912'N	2° 55.512'W	Beatrice	Subsurface
418	58° 17.392'N	2° 51.018'W	Beatrice	Subsurface
420	58° 18.216'N	2° 51.220'W	Beatrice	Subsurface
412	58° 13.314'N	2° 55.561'W	Beatrice	Subsurface
403	58° 15.888'N	2° 37.860'W	Caledonia	Subsurface
404	58° 16.871'N	2° 36.044'W	Caledonia	Subsurface
405	58° 17.758'N	2° 34.141'W	Caledonia	Subsurface
406	58° 18.658'N	2° 32.102'W	Caledonia	Subsurface
337	58° 15.096'N	2° 40.236'W	Moray East	Subsurface
343	58° 11.520'N	2° 48.180'W	Moray East	Subsurface
349	58° 12.380'N	2° 46.590'W	Moray East	Subsurface
395	58° 10.909'N	2° 48.176'W	Moray East	Subsurface
399	58° 13.597'N	2° 41.838'W	Moray East	Subsurface
400	58° 14.205'N	2° 41.758'W	Moray East	Subsurface
396	58° 11.809'N	2° 47.320'W	Moray East	Subsurface
401	58° 14.205'N	2° 41.099'W	Moray East	Subsurface
48	58° 04.022'N	3° 07.497'W	Moray West	Subsurface
49	58° 04.558'N	3° 01.142'W	Moray West	Subsurface
50	58° 06.361'N	2° 57.090'W	Moray West	Subsurface
52	58° 11.102'N	2° 51.299'W	Moray West	Subsurface
159	58° 09.357'N	2° 52.500'W	Moray West	Subsurface
280	58° 01.102'N	3° 09.271'W	Moray West	Subsurface
371	58° 01.919'N	3° 12.541'W	Moray West	Subsurface
372	58° 02.504'N	3° 11.039'W	Moray West	Subsurface
373	58° 03.102'N	3° 09.612'W	Moray West	Subsurface
374	58° 02.400'N	3° 07.170'W	Moray West	Subsurface
375	58° 04.589'N	3° 06.062'W	Moray West	Subsurface
376	58° 05.190'N	3° 04.620'W	Moray West	Subsurface
377	58° 03.696'N	3° 03.921'W	Moray West	Subsurface
378	58° 06.000'N	3° 03.360'W	Moray West	Subsurface
379	58° 05.474'N	3° 01.785'W	Moray West	Subsurface
380	58° 06.068'N	3° 01.788'W	Moray West	Subsurface
381	58° 06.661'N	3° 00.364'W	Moray West	Subsurface
382	58° 06.660'N	2° 58.940'W	Moray West	Subsurface
383	58° 05.475'N	2° 58.938'W	Moray West	Subsurface
384	58° 07.428'N	2° 58.230'W	Moray West	Subsurface
385	58° 09.042'N	2° 57.255'W	Moray West	Subsurface
386	58° 07.285'N	2° 56.067'W	Moray West	Subsurface
387	58° 07.847'N	2° 56.084'W	Moray West	Subsurface
388	58° 10.216'N	2° 56.083'W	Moray West	Subsurface
389	58° 09.474'N	2° 55.713'W	Moray West	Subsurface

390	58° 08.501'N	2° 54.962'W	Moray West	Subsurface
391	58° 07.980'N	2° 53.802'W	Moray West	Subsurface
392	58° 09.786'N	2° 53.418'W	Moray West	Subsurface
393	58° 10.217'N	2° 51.890'W	Moray West	Subsurface

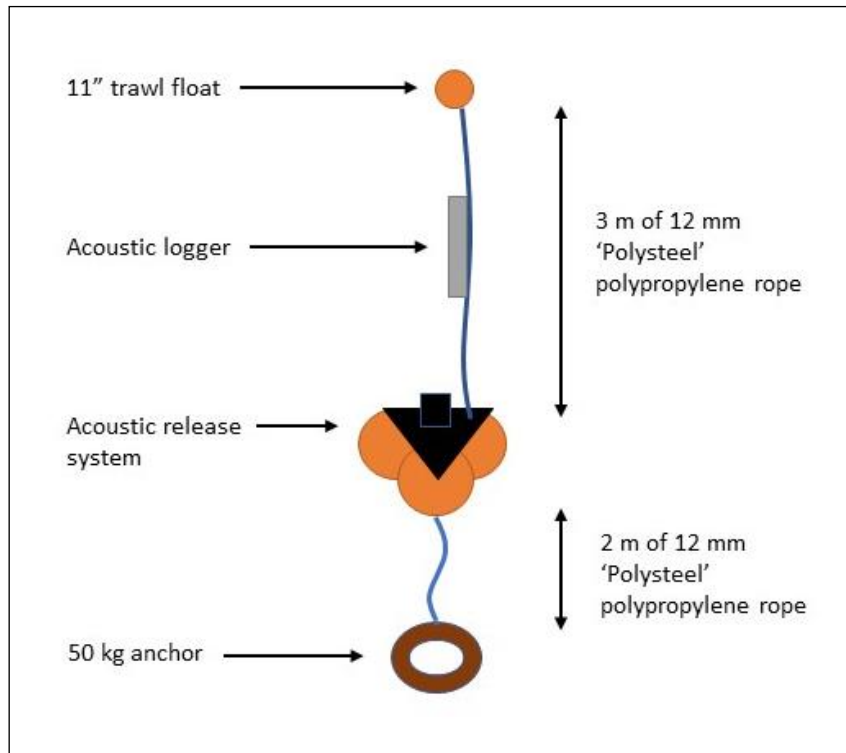


Figure S1 Schematic of subsurface mooring with acoustic logger or sound recorder



Acoustic logger

(600 x 95 mm)



Sound recorder

(200 x 60 mm)



Sound recorder

(350 x 100 mm)



Sound recorder

(530 x 60 mm)

Figure S2 Examples of equipment which the moorings above support