

# UNIVERSITY OF ABERDEEN

## NOTICE TO MARINERS

No. UoA/03/2023

### MORAY FIRTH, SCOTLAND

Date of notice: 19<sup>th</sup> July 2023

For information and enquiries please contact:

**Robert Bashford**

Lighthouse Field Station,  
University of Aberdeen,  
George St.,  
Cromarty,  
IV11 8YL

**+44 (0)1381 600548**

**[robert.bashford@abdn.ac.uk](mailto:robert.bashford@abdn.ac.uk)**

Mariners are advised that the University of Aberdeen intends to **install 49 moorings and equipment** within the **Beatrice, Moray East, Moray West and Caledonia Windfarm** areas, at the locations listed in Table 1 of the current notice and illustrated in Figure 1. The moorings will remain in place for approximately **6 months** and will support acoustic loggers that record echolocation clicks of dolphins and porpoises and broad-band sound recorders (see Figure S2). All are subsurface moorings that extend no more than 6 m vertically from the seabed (see Figure S1). The moorings will not be surface marked.

All installation works will be carried out by Moray First Marine Ltd., using MV “Waterfall”. These works are expected to commence between the **15<sup>th</sup> and 30<sup>th</sup> August 2023** and the total duration of the installation campaign is not expected to exceed **10 days**, subject to weather. The order of deployments will be dependent on weather and tidal conditions.

Information regarding the recovery of these moorings and equipment will be informed in a separate Notice to Mariners.

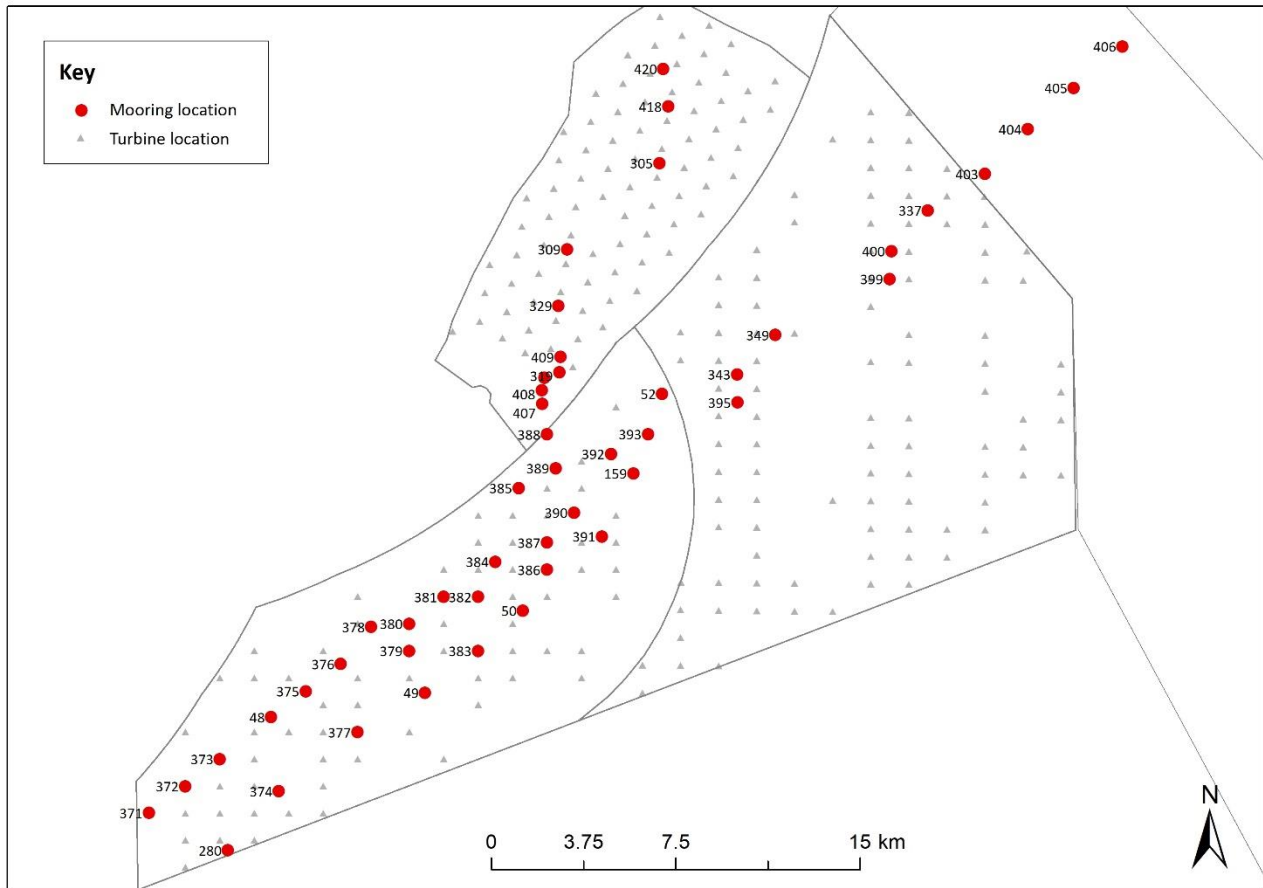
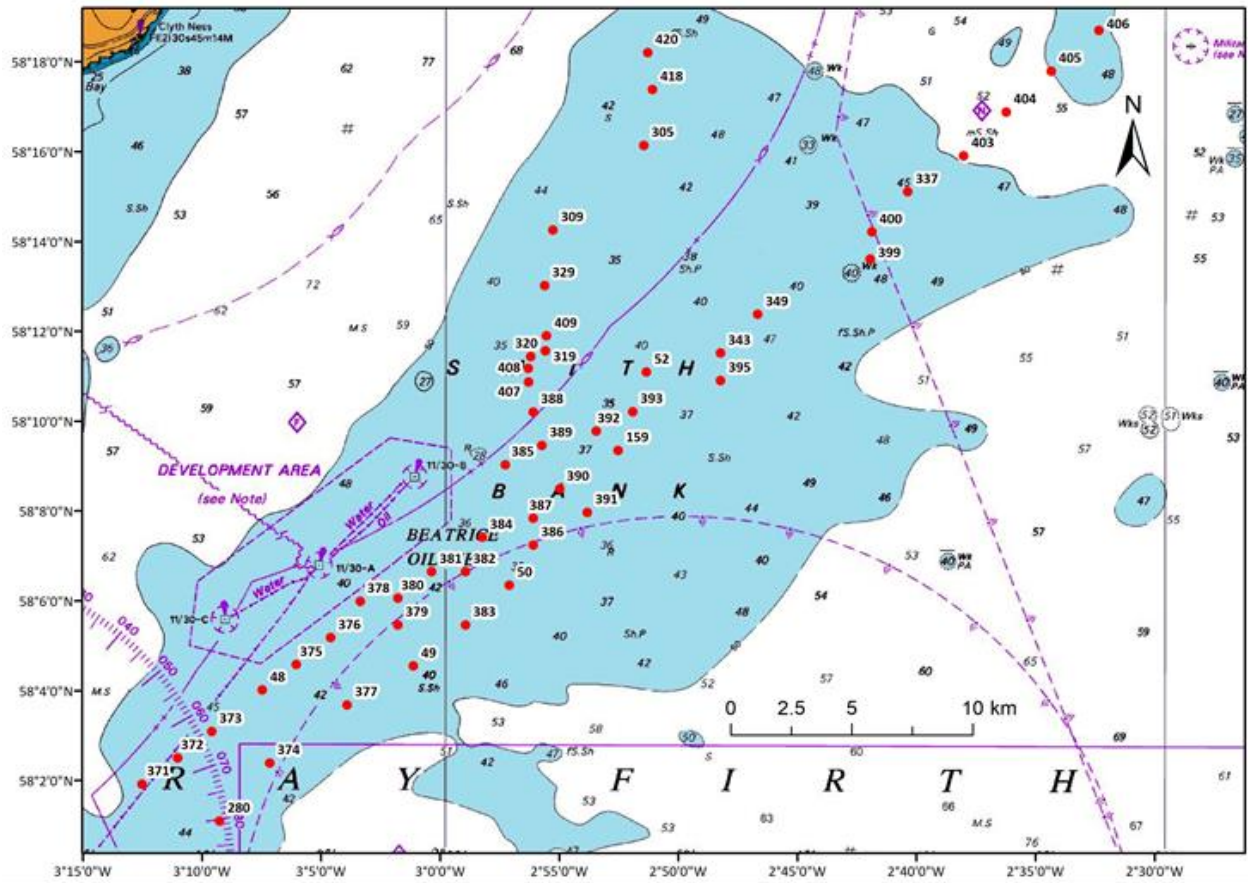



Figure 1 Mooring locations (red dots) noted in this Notice to Mariners. Top panel: showing Smith Bank and adjacent waters; bottom panel: showing windfarm areas and turbine locations.

Table 1 Proposed mooring installations

Name	Coordinates (WGS84 datum)		Characteristics	Windfarm site
305	58° 16.150' N	2° 51.394' W	Subsurface	Beatrice
309	58° 14.267' N	2° 55.238' W	Subsurface	Beatrice
319	58° 11.577' N	2° 55.562' W	Subsurface	Beatrice
320	58° 11.453' N	2° 56.181' W	Subsurface	Beatrice
329	58° 13.031' N	2° 55.596' W	Subsurface	Beatrice
407	58° 10.882' N	2° 56.280' W	Subsurface	Beatrice
408	58° 11.184' N	2° 56.286' W	Subsurface	Beatrice
409	58° 11.910' N	2° 55.515' W	Subsurface	Beatrice
418	58° 17.392' N	2° 51.018' W	Subsurface	Beatrice
420	58° 18.216' N	2° 51.220' W	Subsurface	Beatrice
403	58° 15.888' N	2° 37.860' W	Subsurface	Caledonia
404	58° 16.860' N	2° 36.060' W	Subsurface	Caledonia
405	58° 17.760' N	2° 34.140' W	Subsurface	Caledonia
406	58° 18.660' N	2° 32.100' W	Subsurface	Caledonia
337	58° 15.095' N	2° 40.235' W	Subsurface	Moray East
343	58° 11.520' N	2° 48.180' W	Subsurface	Moray East
349	58° 12.380' N	2° 46.590' W	Subsurface	Moray East
395	58° 10.908' N	2° 48.176' W	Subsurface	Moray East
399	58° 13.597' N	2° 41.838' W	Subsurface	Moray East
400	58° 14.205' N	2° 41.760' W	Subsurface	Moray East
48	58° 04.022' N	3° 07.497' W	Subsurface	Moray West
49	58° 04.560' N	3° 01.140' W	Subsurface	Moray West
50	58° 06.360' N	2° 57.090' W	Subsurface	Moray West
52	58° 11.100' N	2° 51.300' W	Subsurface	Moray West
159	58° 09.357' N	2° 52.500' W	Subsurface	Moray West
280	58° 01.104' N	3° 09.270' W	Subsurface	Moray West
371	58° 01.920' N	3° 12.540' W	Subsurface	Moray West
372	58° 02.506' N	3° 11.040' W	Subsurface	Moray West
373	58° 03.100' N	3° 09.614' W	Subsurface	Moray West
374	58° 02.400' N	3° 07.170' W	Subsurface	Moray West
375	58° 04.590' N	3° 06.060' W	Subsurface	Moray West
376	58° 05.190' N	3° 04.620' W	Subsurface	Moray West
377	58° 03.696' N	3° 03.921' W	Subsurface	Moray West
378	58° 06.000' N	3° 03.360' W	Subsurface	Moray West
379	58° 05.476' N	3° 01.788' W	Subsurface	Moray West
380	58° 06.068' N	3° 01.788' W	Subsurface	Moray West
381	58° 06.661' N	3° 00.364' W	Subsurface	Moray West
382	58° 06.661' N	2° 58.938' W	Subsurface	Moray West
383	58° 05.476' N	2° 58.939' W	Subsurface	Moray West
384	58° 07.428' N	2° 58.230' W	Subsurface	Moray West
385	58° 09.042' N	2° 57.252' W	Subsurface	Moray West
386	58° 07.254' N	2° 56.084' W	Subsurface	Moray West
387	58° 07.847' N	2° 56.084' W	Subsurface	Moray West
388	58° 10.216' N	2° 56.083' W	Subsurface	Moray West
389	58° 09.474' N	2° 55.716' W	Subsurface	Moray West

Name	Coordinates (WGS84 datum)		Characteristics	Windfarm site
390	58° 08.502' N	2° 54.960' W	Subsurface	Moray West
391	58° 07.980' N	2° 53.802' W	Subsurface	Moray West
392	58° 09.786' N	2° 53.418' W	Subsurface	Moray West
393	58° 10.218' N	2° 51.888' W	Subsurface	Moray West

Waterfall	
<b>General Description and Dimensions:</b>	Workboat, UK MCA Cat.2, 60nm from safe haven LOA 16m, Beam 6m.
<b>Call sign:</b>	2CBT4
<b>MMSI:</b>	235071392
<b>On Board Contact:</b>	Bill Ruck, 07775 802963
<b>E-mail:</b>	<a href="mailto:bill@moraymarine.com">bill@moraymarine.com</a>
	

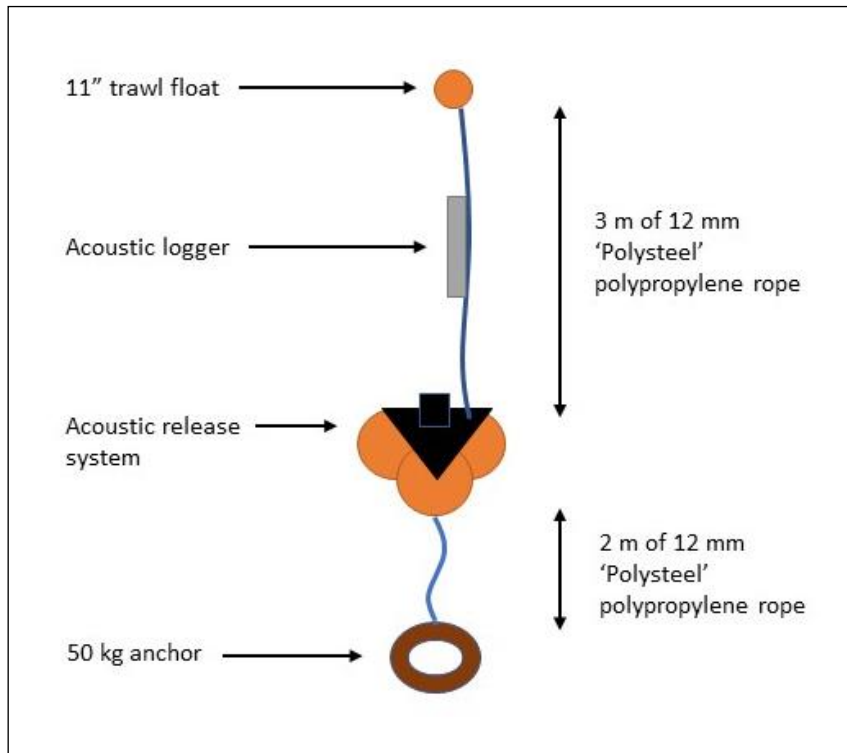


Figure S1 Schematic of subsurface mooring with acoustic logger or sound recorder



Figure S2 Examples of equipment which the moorings above support