

## Shetland HVDC Link

### Shetland to Caithness

## Notice to Mariners

<b>NtM Number</b>	<b>Shetland HVDC Link/040</b>
<b>Date of Issue</b>	<b>04.08.2023</b>

### 1 Planned Activity

NKT, on behalf of Scottish Hydro Electric Transmission Plc, are installing the Shetland HVDC Link. For installation Campaign 2 (from Weisdale Voe, Shetland, KP0 to KP57), rock placement works remain to be completed along the cable route. For Campaign 3 (KP57 to KP160), cable installation works began on the 19<sup>th</sup> June 2023. Please see chart and coordinates provided below.

The Shetland HVDC link is a critical electricity transmission link and will form part of the electrical transmission grid that is essential to the transport of renewable energy between the locations where it is generated and areas of demand, and the delivery of both Scotland's and the United Kingdom's 2030 climate change targets.

#### **Campaign 2 (KP0 to KP57)**

The cable has been laid on the seabed floor and trenched to the required burial depth in the seabed where possible, the remaining works required along the Campaign 2 section of the cable is rock placement works, to be undertaken by the rock placement vessels the **Flintstone** and **Rockpiper**. To protect the cable in the cable corridor, Guard Vessels are currently deployed along the route.

#### **Campaign 3 (KP57 to KP160)**

For installation Campaign 3, the vessel, **NKT Victoria**, has laid the cable on the seabed. Currently the trenching vessel, **Grand Canyon III**, is trenching the cable to the required burial depth in the seabed. Any sections along the cable route that cannot be trenched, rock placement will be undertaken by the **Flintstone** and **Rockpiper** to achieve the required protection. All works will be continuous, 24 hours a day. For any crossings, protection will follow the agreement made with the asset owner.

In the period between cable lay and cable burial, or protection by rock placement, the cable will be exposed on the seafloor. During this time the cable is sensitive to any external impact and constitutes a snagging risk for anchoring, fishing gear or other equipment with seabed intervention. For this reason, the cable corridor will remain closed for any fishing that interacts with the seabed, anchoring or use of other equipment with seabed intervention.

To protect the cable in the cable corridor, **Guard Vessels** will be deployed along the route.

It is requested that all vessels maintain a minimum of 500m safe distance from the installation vessels and pass at reduced speed. It is advised that mobile fishing gear should not be placed within 500m of the cable corridor. Static fishing gear, or any other equipment that interacts with the seabed, should not be deployed within the cable corridor.

Co-ordinates of the cable route and charts of the working area are provided below.

Please be aware that vessels **Grand Canyon III**, **Flintstone** and **Rockpiper** will be restricted in their ability to manoeuvre as defined under COLREGs (International Regulations for Preventing Collisions at Sea 1972). Masters of vessels are therefore requested to maintain their vessels at a minimum safe passing distance of 500 metres. For restricted areas, communication should be made to **Grand Canyon III**, **Flintstone**, **Rockpiper** and the **Guard Vessels** for safe passage.

**Grand Canyon III**, **Flintstone** and **Rockpiper** will display the appropriate shapes and lights in accordance with COLREGs Rules 16 and 18.

#### **Guard Vessels**

To protect the cable during installation activities Guard Vessels will be placed at approximately 15km intervals along the cable route. To provide the required coverage, approximately 11 guard vessels are expected to be utilised. The primary purpose of the Guard Vessels is to guard any unprotected cable along the cable route.

The Guard Vessels will operate on a 24hr / 7 day per week basis. Any exchange of vessels shall be on site and coordinated so the unprotected cable is never unguarded.

The Guard Vessels have three guidance zones, these are described below. It should be noted that these are guidance zones and have the potential to vary depending on vessel zone and sea conditions:

**OBSERVATION ZONE** – referenced as 15km but extends as far as visible.

**EARLY WARNING ZONE** – extends out 7.5km either side of the cable route. Entry into this zone is monitored by the Guard Vessels. Any vessel moving into the Early Warning Zone will be contacted and made aware of the project's restricted areas.

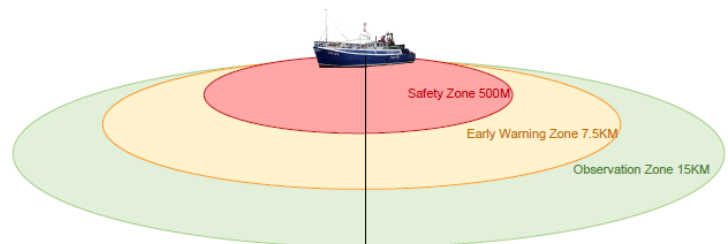


Illustration reproduced with permission from SOLACE Global

**SAFETY ZONE** – represents an area of water 500m around the cable route. It extends out for 500m in all directions of the cable. For any vessel that poses a risk to the unprotected cable, reasonable efforts to prevent entry into the SAFETY ZONE will be undertaken.

## 2 Outline Programme of Works (approximate)

Campaign 2 (KP0 to KP60)		
Guard Vessels	Earliest Start Date: Onsite	Estimated Completion Date: 06/12/2023
Rock Placement ( <i>Flintstone</i> )	Earliest Start Date: 25/08/2023	Estimated Completion Date: 06/12/2023
Rock Placement ( <i>Rockpiper</i> )	Earliest Start Date: 24/09/2023	Estimated Completion Date: 06/12/2023
Campaign 3 (KP57 to KP160)		
Cable Lay ( <i>NKT Victoria</i> )	Complete	Complete
Trenching ( <i>Grand Canyon III</i> )	Earliest Start Date: 21/07/2023	Estimated Completion Date: 27/09/2023
Rock Placement ( <i>Flintstone</i> )	Earliest Start Date: 25/08/2023	Estimated Completion Date: 06/12/2023
Rock Placement ( <i>Rockpiper</i> )	Earliest Start Date: 24/09/2023	Estimated Completion Date: 06/12/2023
Guard Vessels	Earliest Start Date: 19/06/2023	Estimated Completion Date: 06/12/2023

**These dates are subject to weather and operational uncertainties that could extend the overall duration to 20/12/2023, with the potential for further extension to the work duration.**

## 3 Chart of Activity Area

Please find chart on the last page of the document.

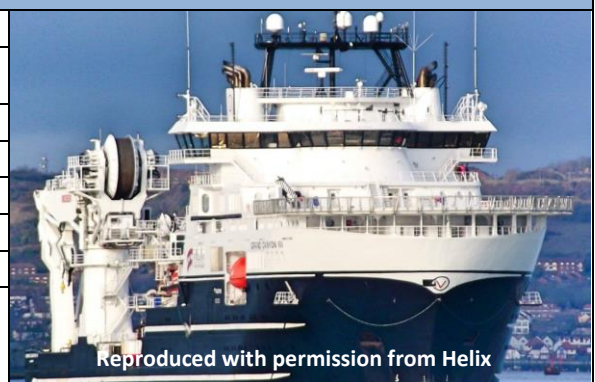
## 4 Safe Clearances, Navigation Safety Features and Safety Notes for Mariners

Vessels are requested to maintain a safe distance (500m) from **Grand Canyon III, Flintstone, Rockpiper** and the **Guard Vessels**. For restricted areas, communication should be made to **Grand Canyon III, Flintstone, Rollingstone** and the **Guard Vessels** for safe passage.


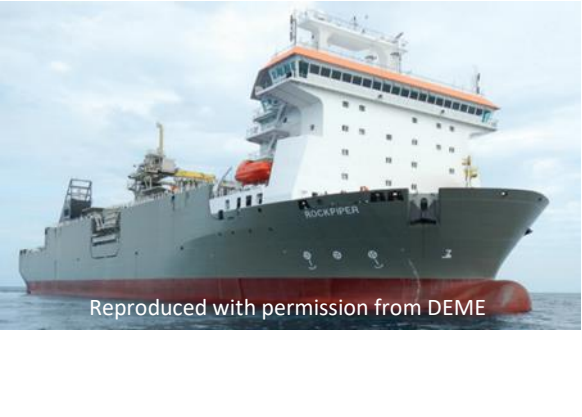


All vessels are required to comply with the COLREGS, especially rules 16 and 18 as **Grand Canyon III, Flintstone** and **Rockpiper** will be restricted in their ability to manoeuvre.

## 5 Vessel Details


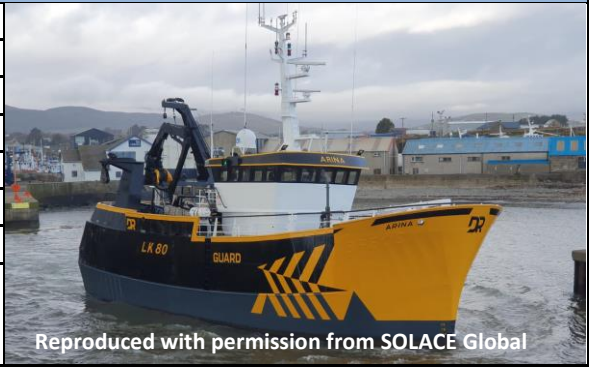
Trenching Vessel	
Vessel Name:	<i>Grand Canyon III</i>
Vessel Type / LOA(m):	Multi-Role construction support Vessel/ 127.75
IMO Number:	9695963
VHF Call Sign:	LACJ8
MMSI:	257010590
Vessel Bridge Mobile:	+47 928 86721
Vessel Sat Phone:	+47 21034519
Onshore Contact:	<a href="mailto:frode@volstad.com">frode@volstad.com</a>
Rock Placement Vessels	
Vessel Name:	<i>Flintstone</i>
Vessel Type / LOA(m):	DP2 Fallpipe vessel / 154.6m
IMO Number:	9528433
VHF Call Sign:	PBZD



Reproduced with permission from Helix

<b>MMSI:</b>	245861000	 <p>Reproduced with permission from DEME</p>
<b>Vessel Bridge Mobile:</b>	+47 48402985	
<b>Vessel Sat Phone:</b>	+49 42 151 7219 1963	
<b>Onshore Contact:</b>	B. Peeters (Fleet Manager) M: +31765207208 A. Koeman (Operations Manager) M: +31 6 22295708	
<b>Vessel Name:</b>	<i>Rockpiper</i>	 <p>Reproduced with permission from DEME</p>
<b>Vessel Type / LOA(m):</b>	Fallpipe vessel / 158.6	
<b>IMO Number:</b>	9583861	
<b>VHF Call Sign:</b>	5BML3	
<b>MMSI:</b>	209449000	
<b>Vessel Bridge Mobile:</b>	Bridge phone: +31 78 808 0273 GSM: +47 95 09 309 7	
<b>Vessel Sat Phone:</b>	INMARSAT: +870 773 941 740	
<b>Onshore Contact:</b>	S. Lundshof (Fleet Manager) T +31 78 69 68 546 M +31 61 24 54 02  C. Klamer (Operations Manager) T +31 78 69 69 523 M +31 65 18 69 325	
<b>Guard Vessels – Campaign 2 (KP0 to KP60)</b>		
<b>Vessel Name:</b>	<b>Dauntless</b>	 <p>Reproduced with permission from SOLACE Global</p>
<b>Vessel Type / LOA(m):</b>	23.90M	
<b>IMO Number:</b>	9182617	
<b>VHF Call Sign:</b>	MYR16	
<b>MMSI:</b>	232004190	
<b>Vessel Bridge Mobile:</b>	+44 1261 455440	
<b>Vessel Sat Phone:</b>	+44 1261 455440	
<b>Onshore Contact:</b>	<a href="mailto:operations@solaceglobal.com">operations@solaceglobal.com</a>	
<b>Vessel Name:</b>	<b>Genesis</b>	 <p>Reproduced with permission from SOLACE Global</p>
<b>Vessel Type / LOA(m):</b>	24.75M	
<b>IMO Number:</b>	9060156	
<b>VHF Call Sign:</b>	MSDK3	
<b>MMSI:</b>	235000097	
<b>Vessel Bridge Mobile:</b>	+44 1261 455 437	
<b>Vessel Sat Phone:</b>	+44 1261 455 437	
<b>Onshore Contact:</b>	<a href="mailto:operations@solaceglobal.com">operations@solaceglobal.com</a>	
<b>Vessel Name:</b>	<b>Reaper</b>	
<b>Vessel Type / LOA(m):</b>	18.25M	
<b>IMO Number:</b>	8957209	
<b>VHF Call Sign:</b>	MFIX5	
<b>MMSI:</b>	232022358	
<b>Vessel Bridge Mobile:</b>	+44 1947 878 332	
<b>Vessel Sat Phone:</b>	+44 1947 878 332	



<b>Onshore Contact:</b>	<a href="mailto:operations@solaceglobal.com">operations@solaceglobal.com</a>	 <p>Reproduced with permission from SOLACE Global</p>
<b>Guard Vessels - Relief Vessel</b>		
<b>Vessel Name:</b>	<b>Fairline Surveyor</b>	 <p>Reproduced with permission from SOLACE Global</p>
<b>Vessel Type / LOA(m):</b>	Workboat / 23.99	
<b>IMO Number:</b>	8965464	
<b>VHF Call Sign:</b>	MZPW8	
<b>MMSI:</b>	232007960	
<b>Vessel Bridge Mobile:</b>	0044 1779 868 135	
<b>Vessel Sat Phone:</b>	N/A	
<b>Onshore Contact:</b>	<a href="mailto:operations@solaceglobal.com">operations@solaceglobal.com</a>	
<b>Guard Vessels – Campaign 3 (KP57 to KP160)</b>		
<b>Vessel Name:</b>	<b>Arina</b>	 <p>Reproduced with permission from SOLACE Global</p>
<b>Vessel Type / LOA(m):</b>	25.93M	
<b>IMO Number:</b>	9119701	
<b>VHF Call Sign:</b>	MVMV7	
<b>MMSI:</b>	2340002000	
<b>Vessel Bridge Mobile:</b>	+44 7770 823 004	
<b>Vessel Sat Phone:</b>	+44 7770 823 004	
<b>Onshore Contact:</b>	<a href="mailto:operations@solaceglobal.com">operations@solaceglobal.com</a>	
<b>Vessel Name:</b>	<b>Adorne</b>	 <p>Reproduced with permission from SOLACE Global</p>
<b>Vessel Type / LOA(m):</b>	24.94M	
<b>IMO Number:</b>	8604838	
<b>VHF Call Sign:</b>	MFQ18	
<b>MMSI:</b>	232023203	
<b>Vessel Bridge Mobile:</b>	+44 1723 430 719	
<b>Vessel Sat Phone:</b>	+44 1723 430 719	
<b>Onshore Contact:</b>	<a href="mailto:operations@solaceglobal.com">operations@solaceglobal.com</a>	
<b>Vessel Name:</b>	<b>Accord</b>	 <p>Reproduced with permission from SOLACE Global</p>
<b>Vessel Type / LOA(m):</b>	Fishing Vessel / 19.56m	
<b>IMO Number:</b>	8699845	
<b>VHF Call Sign:</b>	2WEM	
<b>MMSI:</b>	234219000	
<b>Vessel Bridge Mobile:</b>	TBC	
<b>Vessel Sat Phone:</b>	N/A	
<b>Onshore Contact:</b>	<a href="mailto:operations@solaceglobal.com">operations@solaceglobal.com</a>	
<b>Vessel Name:</b>	<b>Reul Na Mara</b>	
<b>Vessel Type / LOA(m):</b>	Workboat/24.8M	

IMO Number:	8782719
VHF Call Sign:	GGKA
MMSI:	234671000
Vessel Bridge Mobile:	+44 1997487416
Vessel Sat Phone:	+44 1997487416
Onshore Contact:	<a href="mailto:operations@solaceglobal.com">operations@solaceglobal.com</a>



Vessel Name:	<b>Fairline Surveyor</b>
Vessel Type / LOA(m):	Workboat / 23.99
IMO Number:	8965464
VHF Call Sign:	MZPW8
MMSI:	232007960
Vessel Bridge Mobile:	0044 1779 868 135
Vessel Sat Phone:	N/A
Onshore Contact:	<a href="mailto:operations@solaceglobal.com">operations@solaceglobal.com</a>



Vessel Name:	<b>Fulmar</b>
Vessel Type / LOA(m):	Workboat/25.9M
IMO Number:	8410110
VHF Call Sign:	GOZJ
MMSI:	234999055
Vessel Bridge Mobile:	+44 1346 417 829
Vessel Sat Phone:	+44 1346 417 829
Onshore Contact:	<a href="mailto:operations@solaceglobal.com">operations@solaceglobal.com</a>



Vessel Name:	<b>Replenish</b>
Vessel Type / LOA(m):	Workboat/24.45M
IMO Number:	8119182
VHF Call Sign:	MASY7
MMSI:	235005180
Vessel Bridge Mobile:	+44 1346 490 795
Vessel Sat Phone:	+44 1346 490 795
Onshore Contact:	<a href="mailto:operations@solaceglobal.com">operations@solaceglobal.com</a>



### Guard Vessels - Relief Vessel

Vessel Name:	<b>Resilient</b>
Vessel Type / LOA(m):	Workboat / 26.2m
IMO Number:	7305382
VHF Call Sign:	GSSE
MMSI:	232711000
Vessel Bridge Mobile:	0044 2841 140 788
Vessel Sat Phone:	N/A
Onshore Contact:	<a href="mailto:operations@solaceglobal.com">operations@solaceglobal.com</a>



## 6 Project Contact Details

### Scottish Hydro Electric Transmission Subsea Cable Installation Manager:

Name: Lorraine Wallington  
 Email: [Lorraine.wallington@sse.com](mailto:Lorraine.wallington@sse.com)  
 Telephone: +44 7443 173906

### Scottish Hydro Electric Transmission Lead Project Manager:

Name: Gavin Stirling  
 Email: [gavin.stirling@sse.com](mailto:gavin.stirling@sse.com)  
 Telephone: +44 758 7161979

### Fisheries Liaison Officer (FLO):

Name: Willie Watt  
 Email: [willie.w@brownmay.com](mailto:willie.w@brownmay.com)  
 Telephone: +44 7897 691860

## 7 Geographic co-ordinates of activity area

*All positions quoted in WGS84 UTM Zone 30N and in degrees and decimal minutes*

**Please note: The coordinates presented below represent a simplified centreline, the works will be completed +/-100m either side of this centreline. As illustrated in the chart**

Area	WGS84 UTM Zone 30N		Degrees Decimal Minutes		
	Easting	Northing	Latitude	Longitude	
Campaign 2 (KP0 – KP57)	593587	6678537	60° 13.968 N	001° 18.608	W
	593819	6677583	60° 13.452 N	001° 18.383	W
	593768	6677225	60° 13.259 N	001° 18.448	W
	593355	6676614	60° 12.936 N	001° 18.912	W
	593048	6676193	60° 12.714 N	001° 19.256	W
	592744	6675924	60° 12.573 N	001° 19.593	W
	591876	6674483	60° 11.809 N	001° 20.571	W
	591811	6674062	60° 11.583 N	001° 20.653	W
	591529	6673353	60° 11.205 N	001° 20.977	W
	591085	6672994	60° 11.018 N	001° 21.467	W
	590216	6672661	60° 10.850 N	001° 22.415	W
	589518	6672323	60° 10.677 N	001° 23.179	W
	589202	6672042	60° 10.530 N	001° 23.528	W
	588971	6670760	60° 09.842 N	001° 23.811	W
	589307	6668136	60° 08.425 N	001° 23.517	W
	588776	6665188	60° 06.844 N	001° 24.167	W
	588923	6663782	60° 06.085 N	001° 24.046	W
	588824	6663094	60° 05.716 N	001° 24.170	W
	588237	6661909	60° 05.085 N	001° 24.834	W
	587600	6661352	60° 04.794 N	001° 25.535	W
	586245	6660207	60° 04.194 N	001° 27.024	W
	584700	6659601	60° 03.887 N	001° 28.704	W
	583772	6659620	60° 03.909 N	001° 29.704	W
	583772	6659620	60° 03.909 N	001° 29.704	W
	582997	6659589	60° 03.902 N	001° 30.540	W
	581736	6659193	60° 03.704 N	001° 31.908	W
	580842	6658430	60° 03.303 N	001° 32.889	W
	580335	6657849	60° 02.996 N	001° 33.449	W
	579716	6656420	60° 02.234 N	001° 34.149	W
	579515	6655499	60° 01.74 N	001° 34.386	W
576590	6646943	59° 57.165 N	001° 37.726	W	



	575212	6642730	59°	54.911	N	001°	39.297	W
	574721	6640824	59°	53.890	N	001°	39.865	W
	574356	6640196	59°	53.556	N	001°	40.270	W
	573617	6638170	59°	52.473	N	001°	41.105	W
	573617	6638170	59°	52.473	N	001°	41.105	W
	573412	6637488	59°	52.107	N	001°	41.339	W
	571836	6632825	59°	49.612	N	001°	43.124	W
	571661	6630833	59°	48.541	N	001°	43.352	W
<b>Campaign 3 (KP57 – KP160)</b>	571661	6630833	59°	48.541	N	001°	43.352	W
	571256	6627795	59°	46.909	N	001°	43.848	W
	568401	6618236	59°	41.789	N	001°	47.085	W
	565246	6608784	59°	36.728	N	001°	50.623	W
	562919	6599062	59°	31.512	N	001°	53.27	W
	562089	6590667	59°	26.997	N	001°	54.297	W
	562231	6589890	59°	26.577	N	001°	54.16	W
	562231	6589890	59°	26.577	N	001°	54.16	W
	562386	6589161	59°	26.183	N	001°	54.009	W
	563477	6585075	59°	23.972	N	001°	52.927	W
	563462	6579373	59°	20.901	N	001°	53.044	W
	562261	6575133	59°	18.627	N	001°	54.385	W
	562860	6569855	59°	15.779	N	001°	53.845	W
	563995	6560023	59°	10.472	N	001°	52.825	W
	563876	6557985	59°	9.375	N	001°	52.986	W
	561938	6553037	59°	6.726	N	001°	55.103	W
	562052	6550516	59°	5.367	N	001°	55.026	W
	561992	6548616	59°	4.344	N	001°	55.121	W
	556940	6542429	59°	1.053	N	002°	0.503	W
	552875	6537274	58°	58.307	N	002°	4.824	W
551683	6534457	58°	56.798	N	002°	6.107	W	

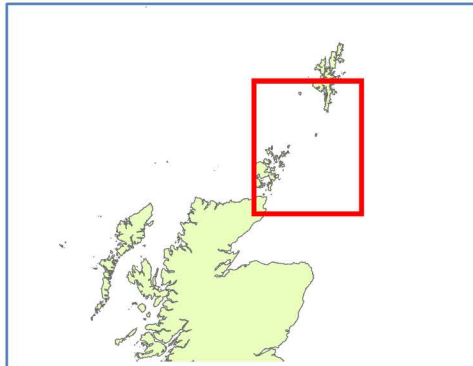
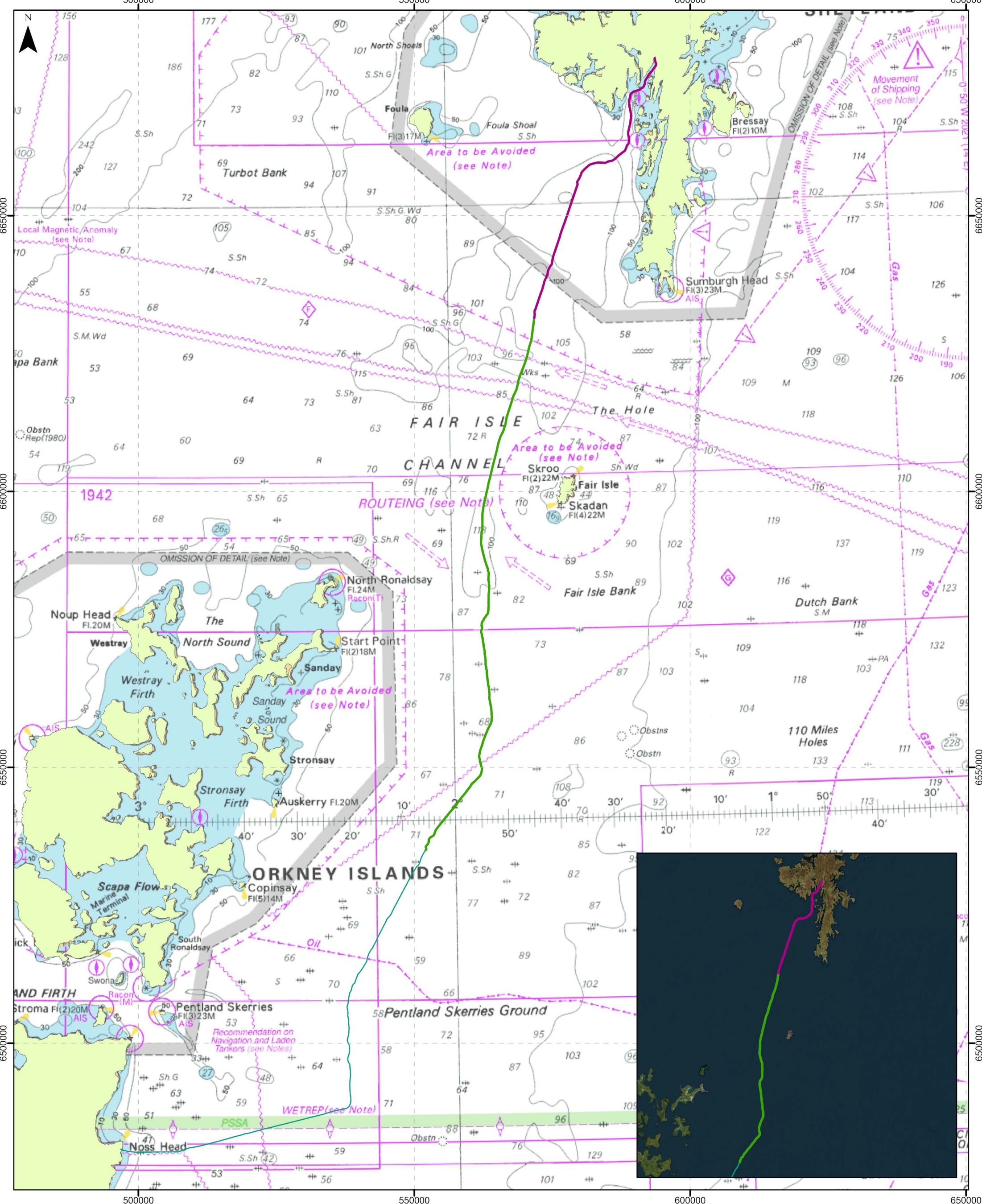
### **Scottish Hydro Electric Transmission Legal Notice**

Please be advised that this Notice to Mariners should be treated as official notice of the nature, duration and location of the works which are scheduled to take place. During the period of notice, failure to remove equipment or entry into the identified location may have serious consequences and may be considered a breach of the Convention on International Regulations for Preventing Collisions at Sea 1972 and/or the Merchant Shipping Act 1995 (a breach of which can carry criminal sanctions). Additionally, Scottish Hydro Electric Transmission may consider taking legal action to remove any obstruction and/or seek damages for any delay, in addition to any legal costs in doing so.

Scottish Hydro Electric Transmission will commence works on the **19<sup>th</sup> June 2023**. Please be advised that any equipment remaining within the notified location, after the **14<sup>th</sup> June 2023**, will be regarded as having the potential to obstruct or delay the works and **will be removed without further notice to you and may be discarded**. In these circumstances, no compensation will be payable to you for any losses (including loss of equipment and/or loss of profit).

For the avoidance of any doubt, no compensation will be paid in relation to any new equipment placed within the identified location following the issuance of this Notice to Mariners.

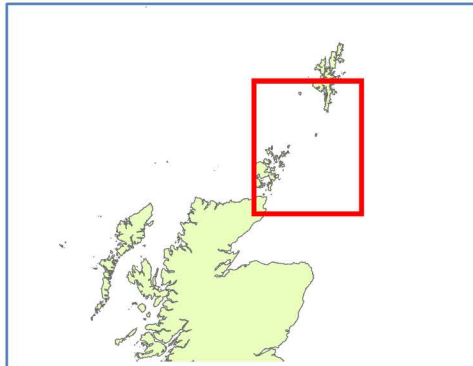
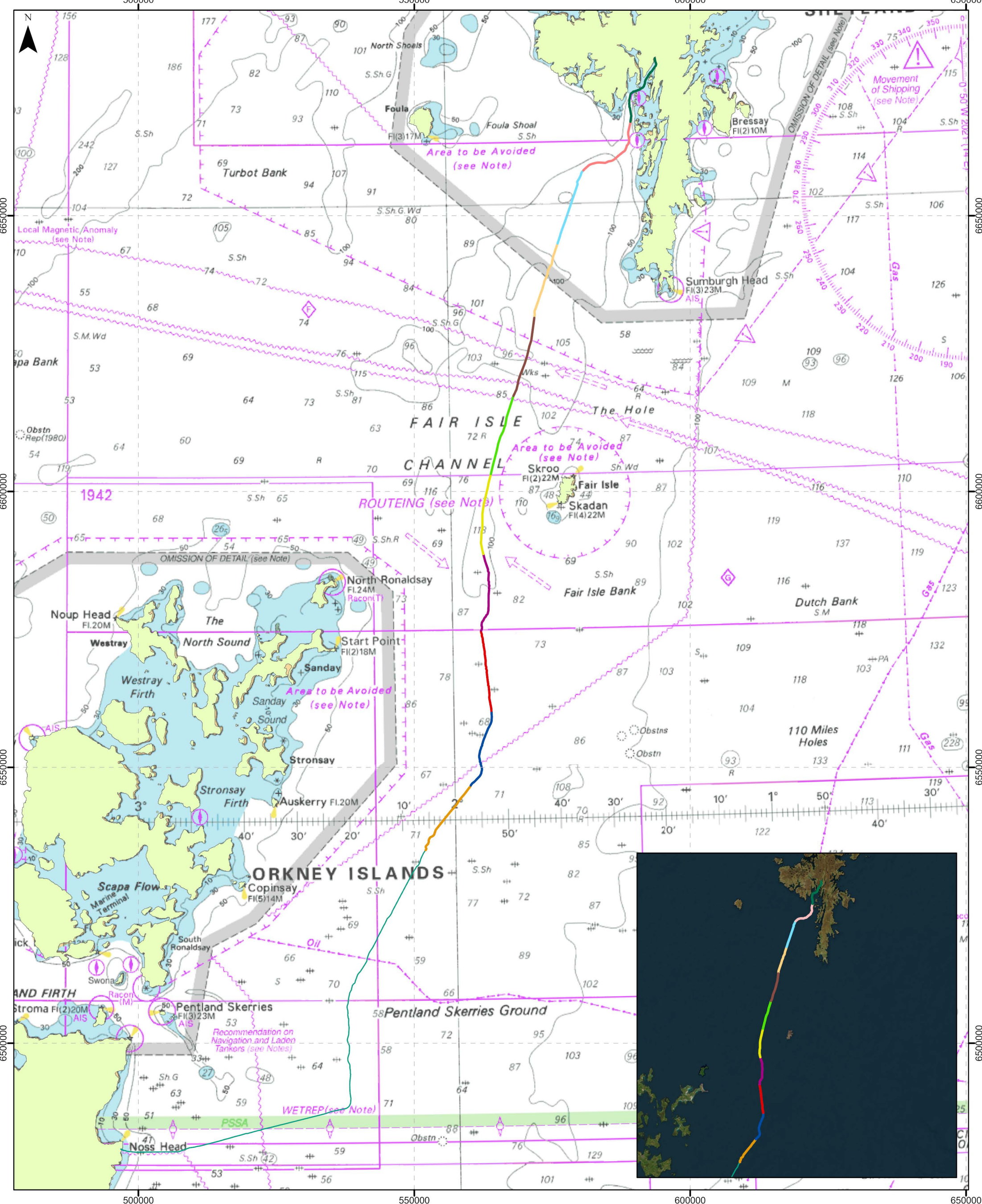




- Legend**
- Campaign 2
  - Campaign 3
  - Shetland HVDC Link

Projection: WGS 1984 UTM Zone 30N		Title: Cable Installation Campaign 2 & 3	
Scale: 0 10 20 km		Client: <b>NKT</b>	
Date: May 2023		MarineSpace AN ERM GROUP COMPANY	
Issue: v0.1	Drawn by: NB		





**Legend**

- Campaign 2 Guard Vessel 1
- Campaign 2 Unguarded Cable Corridor
- Campaign 2 Guard Vessel 3
- Campaign 2 Guard Vessel 4
- Campaign 3 Guard Vessel 1
- Campaign 3 Guard Vessel 2
- Campaign 3 Guard Vessel 3
- Campaign 3 Guard Vessel 4
- Campaign 3 Guard Vessel 5
- Campaign 3 Guard Vessel 6
- Campaign 3 Guard Vessel 7
- Shetland HVDC Link

Projection: WGS 1984 UTM Zone 30N	
Scale: 0 10 20 km	
Date: May 2023	
Issue: v0.1	Drawn by: NB

Title:  
Cable Installation Campaign 2 & 3

Client:  
**NKT**

**MarineSpace**  
AN ERM GROUP COMPANY