

Notice to Mariners

Geophysical Survey

Overview

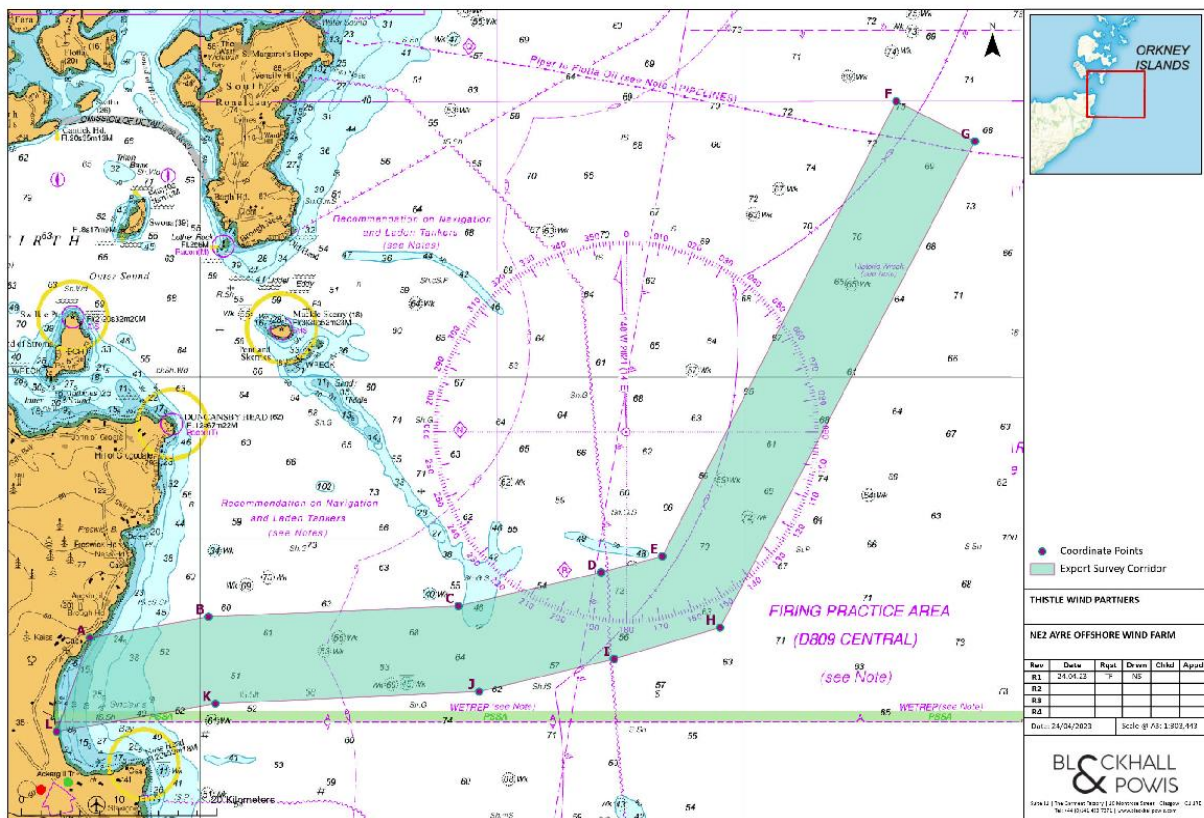
Thistle Wind Partners are developing the proposed Ayre (NE2) Offshore Wind Farm.

Please be advised that G-TEC, on behalf of Thistle Wind Partners (TWP), will be undertaking a Geophysical survey of the proposed Ayre (NE2) Offshore Wind Farm lease option area and also the export cable corridor. The purpose of this Notice to Mariners (NtM) is to further update and outline the working area for the survey vessel, as well as the scope of work. The survey will utilise the R/V Mainport Geo (offshore vessel).

The previous NtM-(TWP-NE2-003), issued on 20th of April continues to be applicable and current.

An overview of the survey area is shown below in Figure 1, with survey area coordinates provided in Table 1.

Figure 1: Ayre (NE2) Geophysical Survey Area



Tabulated Coordinates of Area of Operations – Above Chart refers

Ref points	DDM (WGS84)		UTM30	
	Latitude	Longitude	Northing	Easting
A	58° 32.438' N	3° 06.049' W	6488907	494130
B	58° 33.046' N	2° 59.499' W	6490031	500485
C	58° 33.358' N	2° 45.705' W	6490634	513863
D	58° 34.332' N	2° 37.833' W	6492476	521488
E	58° 34.798' N	2° 34.456' W	6493361	524756
F	58° 47.961' N	2° 21.543' W	6506253	558170
G	58° 46.804' N	2° 17.204' W	6515782	541239
H	58° 32.732' N	2° 31.270' W	6489548	527871
I	58° 31.821' N	2° 37.115' W	6487821	522210
J	58° 30.873' N	2° 44.563' W	6486027	514989
K	58° 30.520' N	2° 59.120' W	6485343	500854
L	58° 29.708' N	3° 07.880' W	6483844	492344

Schedule of Operations

The schedule of the planned Geophysical survey is shown below in the table below.

Survey Dates	Operation	Vessel(s)
22/05/23 – 22/07/23	Geophysical Survey	Mainport Geo

Vessel and Equipment Details

The vessel that will carry out the survey activities is shown below.



Figure 2: RV Mainport Geo. Image: © Irish Mainport Holdings

Survey Description

G-Tec will be conducting a Geophysical survey over Ayre (NE2) development area utilising towed sensors. During the survey the Mainport Geo will be operating at approximately 4 knots with equipment being towed at a distance of up to 300m astern of the vessel.

General Safety Advice

The vessel will be restricted in their ability to maneuver and will display the appropriate lights and shapes prescribed by the International Regulations for Preventing Collisions at Sea. Other vessels are requested to provide a minimum clearance of 500m from the survey vessel during marine operations, and pass at a safe speed. A Fisheries Liaison Officer will be onboard the vessel for the duration of the survey. Regular Securite Messages will be issued on VHF Channel 16 and this Channel will be monitored by the vessel at all times. The vessel will also transmit regular Automatic Transmission System (AIS) Messages.

Vessel Contact Details

The vessel contact details are given below:

Vessel Name: R/V Mainport Geo	
IMO:	9723667
Call sign:	V7A4270
Bridge telephone:	+352 21 2028177
Bridge email:	mainportgeo@mainport.ie
Party Chief telephone:	+32 495 18 47 93 +352 691 510 560
Part Chief email:	partychief@g-tec.eu
Onshore Site Manager email:	Deprez.romain@g-tec.eu

Onshore Based Fisheries Liaison Support

Onshore Fisheries Liaison for the duration of the survey will be coordinated by Blackhall & Powis Ltd. For any commercial fishery queries please contact the Company Fishing Liaison Officers (CFLOs):

Contact Name:	Tommy Finn
Telephone:	07787 503119
Email:	tommy.finn@blackhallpowis.com

Contact Name:	Michael J. Sutherland
Telephone:	07928 484343
Email:	michael.sutherland@blackhallpowis.com