

Notice to Mariners

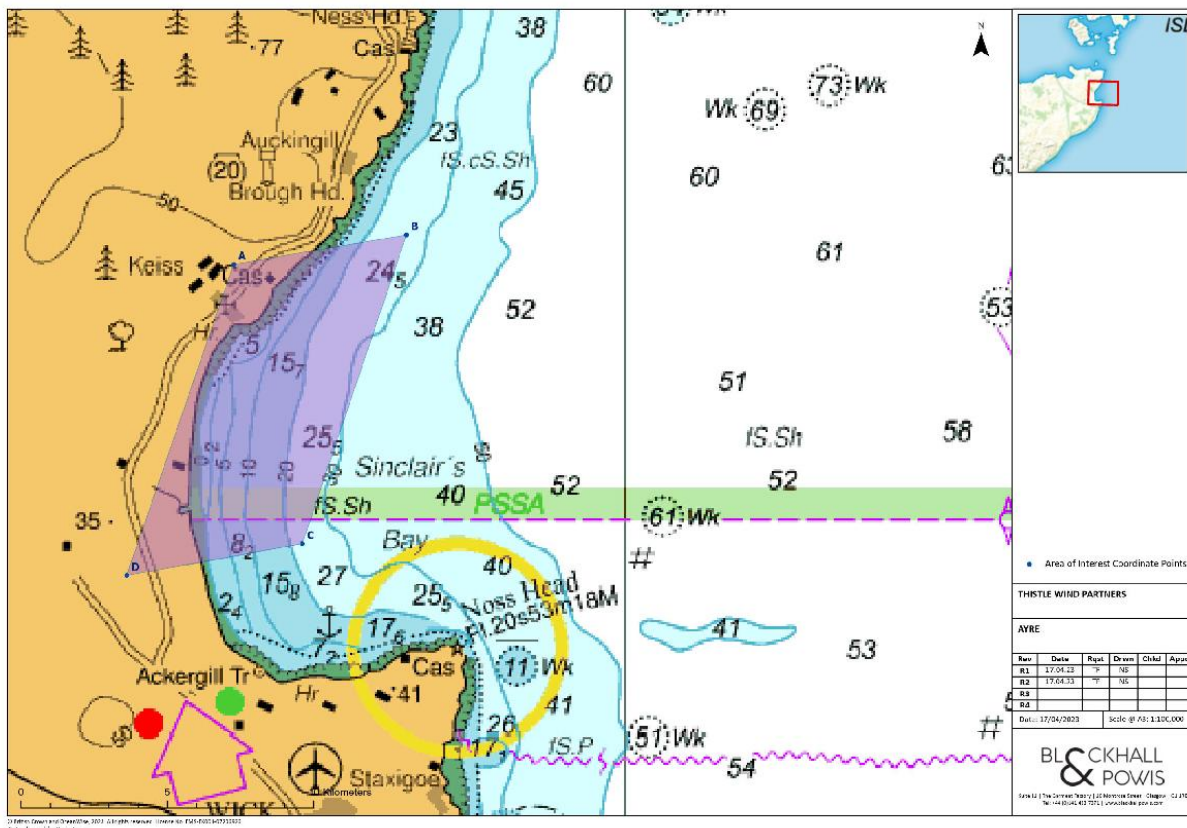
Nearshore Geophysical Survey

Overview

Thistle Wind Partners are developing the proposed Ayre Offshore Wind Farm.

Please be advised that G-TEC, on behalf of Thistle Wind Partners (TWP), are presently undertaking a Nearshore Geophysical Survey of the proposed Ayre Offshore Wind Farm Export Cable Corridor. The purpose of this Notice to Mariners (NtM) is to update the survey timeline, outline the working area for the survey vessel, as well as the scope of work. The survey will utilise the S/V Manor Brunel, Call sign MWUA4.

An overview of the survey area is shown below in Figure 1, with Survey Area Coordinates provided in Table 1.



Figure, Chart 1: Ayre OWF Nearshore (NE2) Geophysical Survey Area

Tabulated Coordinates of Area of Operations – Above Chart refers

REF POINTS	DDM (WGS84)		UTM30	
	LATITUDE	LONGITUDE	NORTHING	EASTING
A	58° 32.28' N	3° 07.11' W	6488953	493022
B	58° 32.45' N	3° 04.01' W	6489477	496106
C	58° 29.46' N	3° 05.56' W	6483942	494239
D	58° 29.27' N	3° 09.10' W	6483377	491100

Schedule of Operations

The schedule of the planned Geophysical survey is shown below in the table below.

Survey Start Date	Survey End Date	Operation	Vessel(s)
01.05.23	21.06.23	Nearshore Geophysical Survey	Manor Brunel

Vessel and Equipment Details

The vessel that will carry out the survey activities is shown below.

Figure 2: Survey Vessel – Manor Brunel

MV 'Manor Brunel'	
Call Sign:	MWUA4
MMSI Number:	232004634
email:	brunel@mreltd.co.uk
Vessel Mobile:	+44 (0)7902 978033
IMO Number:	n/a
	
Owner:	Manor Renewable Energy Ltd
MRE DPA:	Mike James – MRE Fleet Manager +44(0)7754 261420 +44(0)1305 861109 mj@mreltd.co.uk

Survey Description

TWP Ayre OWF project will be conducting a Nearshore Geophysical Survey over the Ayre Export Corridor utilising towed survey equipment. During this operation, the survey will be undertaken by the S/V Manor Brunel, which will be operating at approximately 3-4 knots, with equipment being towed at a distance of up to 200m astern of the vessel.

General Safety Advice

The vessel will be restricted in their ability to manoeuvre and will display the appropriate lights and shapes prescribed by the International Regulations for Preventing Collisions at Sea. The survey is intended to be conducted within an approximate 5km wide corridor to depth contours less than 20m as Per the above referenced Chart 1.

All vessels are requested to provide a minimum clearance of 500m from the survey vessel during these marine operations, and pass at a safe speed. Regular Securite Messages will be issued on VHF Channel 16 and this Channel will be monitored by the vessel at all times. The vessel will also transmit regular Automatic Identification System (AIS) Messages.

Fisheries Liaison

Fisheries liaison associated with the activity will be coordinated by Blackhall and Powis. For any commercial fishery queries please contact the Fisheries Liaison Officer, per the Onshore Fisheries Liaison Contact Details, referenced on Page 5.

Vessel Contact Details

The Survey Vessel contact details are provided below:

Vessel Name: Manor Brunel	
IMO:	232004634
Call sign:	MWUA4
Vessel Mobile:	+44 (0)7902 978033
Email:	brunel@mreltd.co.uk

Onshore Based Fisheries Liaison Support

Onshore Fisheries liaison for the duration of the survey will be coordinated by Blackhall & Powis Ltd. For any commercial fishery queries please contact the Company Fishing Liaison Officers (CFLOs):

Contact Name:	Tommy Finn
Telephone:	07787 503119
Email:	tommy.finn@blackhallpowis.com
	Michael J. Sutherland
Telephone:	07928 484343
Email:	michael.sutherland@blackhallpowis.com
Main Office:	Blackhall & Powis Suite 11 The Garment Factory 10 Montrose Street Glasgow G1 1RE