

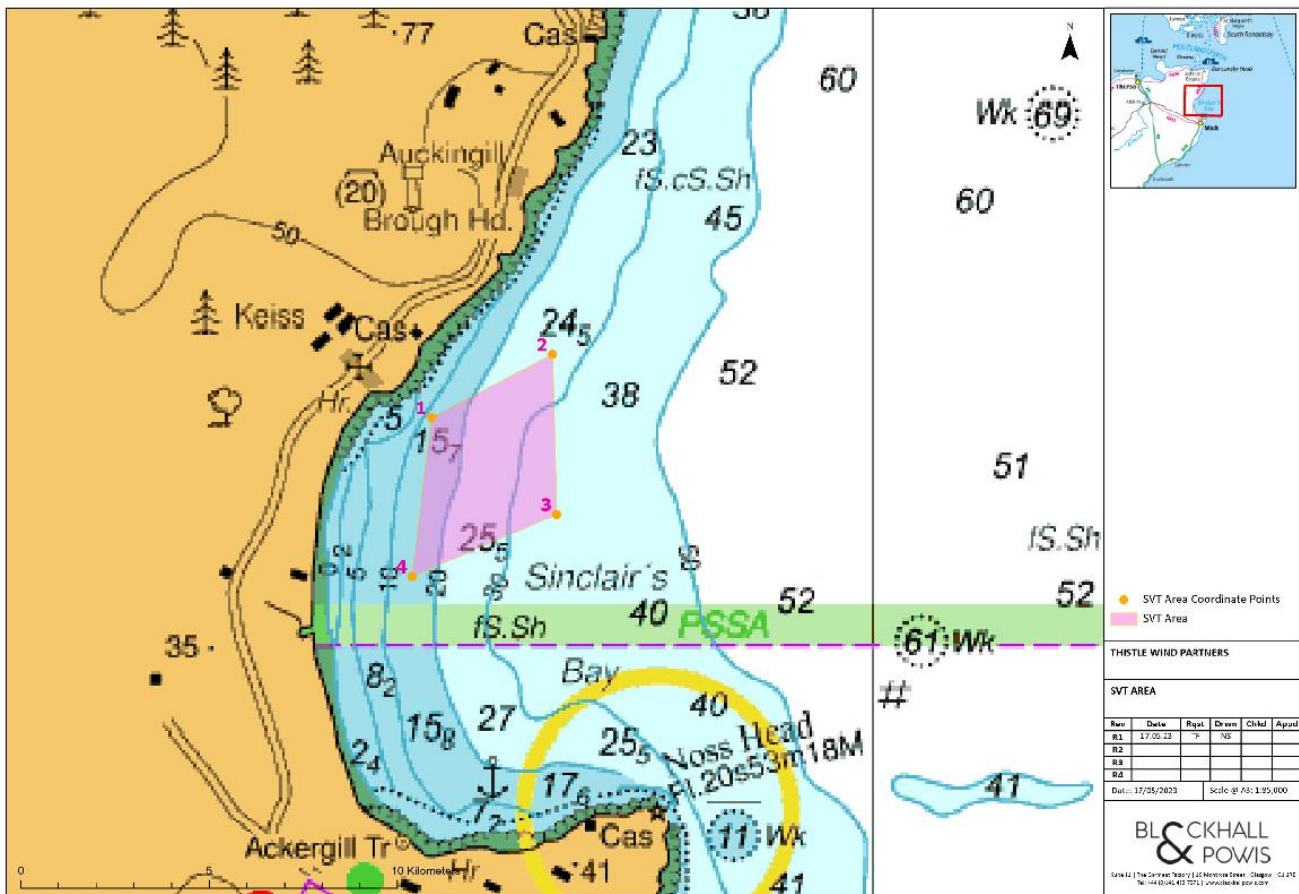
Notice to Mariners

Overview

Please be advised that G-TEC, on behalf of Thistle Wind Partners (TWP), will be undertaking a geophysical survey of the proposed Ayre (NE2) Offshore Wind Farm proposed export cable route in the coming weeks. Prior to the survey being undertaken the survey vessel will be required to undertake calibration tests of its survey equipment. The purpose of this Notice to Mariners (NtM) is to outline the working area required for the survey vessel to undertake the calibration. The pre-survey calibration test will utilise the R/V Mainport Geo (offshore vessel).

An overview of the calibration area is shown below in Figure 1 with area coordinates provided in the table.

Figure 1: SVT Calibration Area



Ref No. NtM-006-TWP-NE2-SVT CALIBRATION TEST
Date of Issue: 18.05.23

Page 2 of 4

Area of Operations

SVT Calibration Area - WGS84

Ref Points	DDM (WGS84)		UTM30	
	Latitude	Longitude	Northing	Easting
1	58° 31.6910300' N	3° 06.3051786' W	6487521	493880
2	58° 32.1627130' N	3° 04.5764313' W	6488394	495559
3	58° 30.9684958' N	3° 04.5172485' W	6486178	495614
4	58° 30.5064120' N	3° 06.5845327' W	6485323	493605

Schedule of Operations

The schedule of the planned calibration tests is shown below in the table below.

Calibration Test Date	Operation	Vessel(s)
01/06/23 – 15/06/23	SVT Calibration	Mainport Geo

Vessel and Equipment Details

The vessel that will carry out the calibration activities is shown below.



Figure 2: RV Mainport Geo. Image: © Irish Mainport Holdings© Irish Mainport Holdings

Survey Description

G-Tec will be conducting pre survey calibration tests. During the tests the Mainport Geo will deposit calibration equipment on the seabed prior to carrying out test survey lines over the top of the in-site calibration equipment, operating at approximately 4 knots with equipment being towed at a distance of up to 300m astern of the vessel. The survey vessel calibration operations will take no more than 48hrs to complete. All equipment will be removed from the seabed once the calibration has been completed.

The vessel will be restricted in their ability to maneuver and will display the appropriate lights and shapes. Other vessels are requested to provide a minimum clearance of 500m from the survey vessel during marine operations, and pass at a safe speed. The survey vessel will monitor VHF Channel 16 at all times.

Ref No. NtM-006-TWP-NE2-SVT CALIBRATION TEST
Date of Issue: 18.05.23

Page 4 of 4

Contact Details

The vessel contact details are given below:

Vessel Name: R/V Mainport Geo	
IMO:	9723667
Call sign:	V7A4270
Bridge telephone:	+352 21 2028177
Bridge email:	mainportgeo@mainport.ie
Party Chief telephone:	+32 495 18 47 93 +352 691 510 560
Part Chief email:	partychief@g-tec.eu
Onshore Site Manager email:	deprez.romain@g-tec.eu

Fisheries Liaison Officers

Fisheries liaison for the survey will be coordinated by Blackhall & Powis Ltd. For any commercial fishery queries please contact the Company Fishing Liaison Officers (CFLOs):

Contact Name:	Tommy Finn
Telephone:	07787 503119
Email:	tommy.finn@blackhallpowis.com
	Michael J. Sutherland
Telephone:	07928 484343
Email:	michael.sutherland@blackhallpowis.com
Main Office:	Blackhall & Powis Suite 11 The Garment Factory 10 Montrose Street Glasgow G1 1RE