

# NOTICE TO MARINERS

**Notice is Hereby Given** that bathymetric survey operations will be undertaken from Duncansby Head to Pentland Skerries.

Operations will commence mid-July for a period of approximately 2 months and re-commencing in November for a period of approximately 1 month.

A-2-Sea Solutions Ltd will be operating the vessel **'Cerys Line'** on a 24-hr basis. The **'Cerys Line'** (26.1m LOA) will be underway throughout operations, sailing survey lines at 5-12 knots.

A-2-Sea Solutions will also be operating the vessel **'Morven'** on a 24-hr basis to survey inshore of the 10m contours. The **'Morven'** (20.0m LOA) will be underway throughout operations sailing survey lines at 4-8 knots.

Both **'Cerys Line'** and **'Morven'** will exhibit the lights and shapes prescribed by the International Regulations for Preventing Collisions at Sea and will maintain a listening watch on VHF Channel 16.

**Please note that no towed equipment is to be deployed, this is an echosounder survey for nautical charting purposes.**

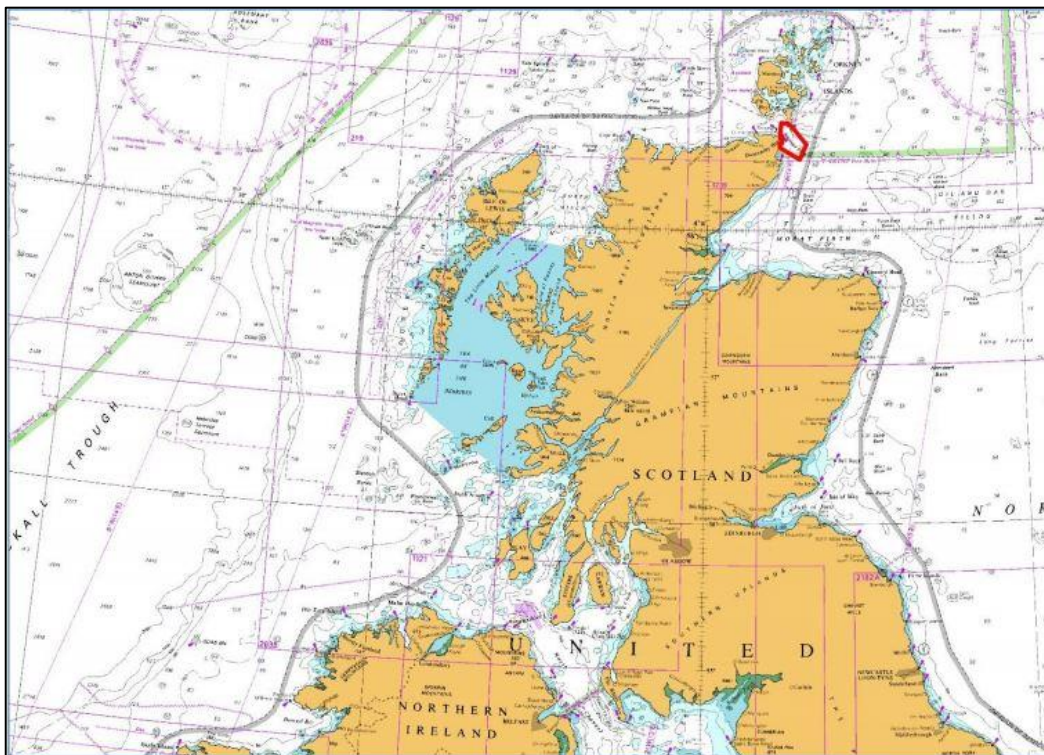


Figure 1: Survey area overview

# Date & Duration

## Cerys Line

Cerys Line will commence survey operations outside of the 10m contour from mid- July for a period of 2 months.

## Morven

Morven will commence survey operations inshore of 10m contour in November for a period of 1 month.

## Survey Area

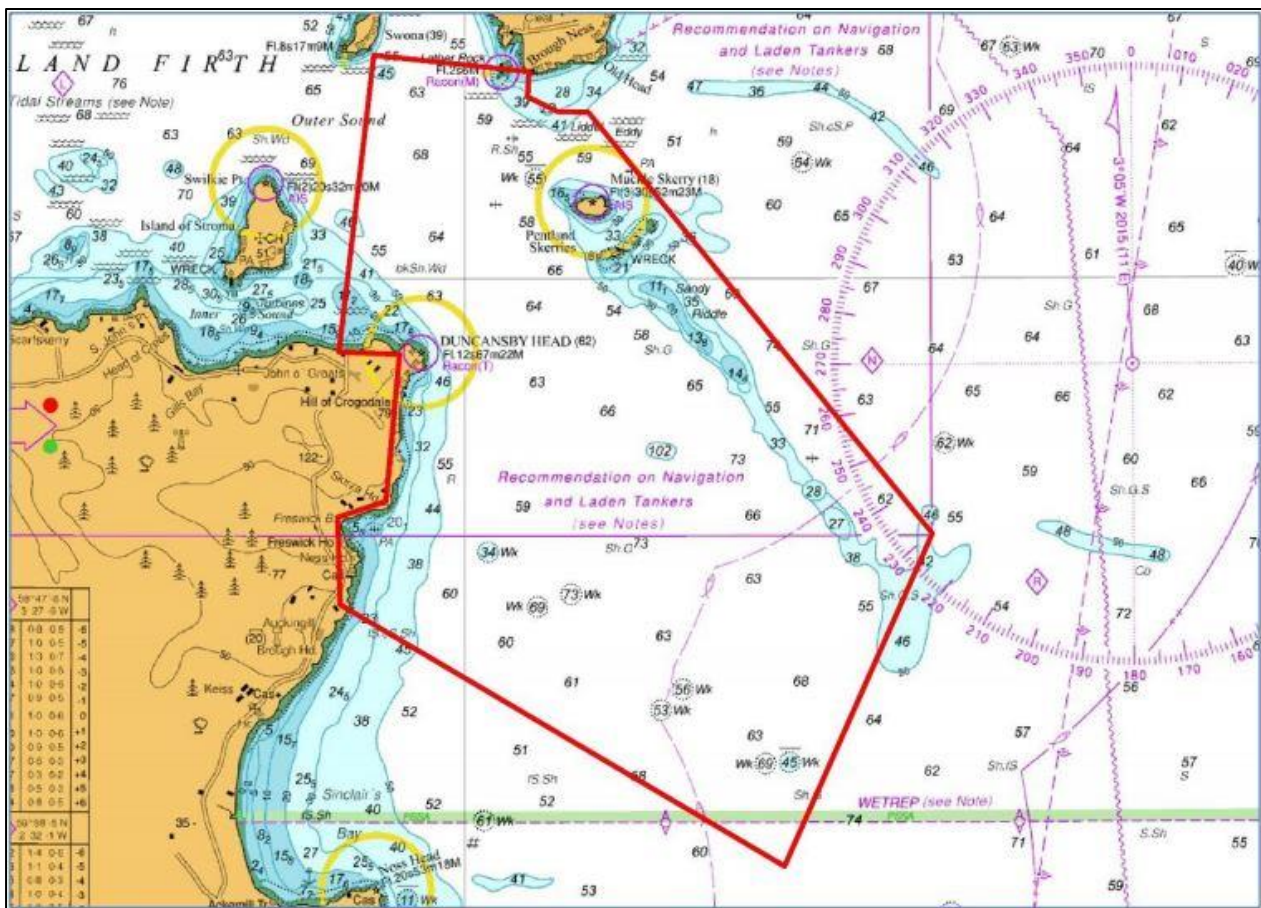


Figure 2: Survey area close-up, Duncansby Head to Pentland Skerries

Point	Latitude (N)	Longitude (W)
01	58-44.1039	003-03.2079
02	58-43.8020	002-57.7393
03	58 43.3366	002-57.7768

Point	Latitude (N)	Longitude (W)
04	58-43.0665	002-56.7005
05	58-43.0547	002-55.6388
06	58-35.2986	002-43.5514
07	58-29.1815	002-48.7750
08	58-33.9986	003-04.3724
09	58-35.6032	003-04.4691
10	58-35.9034	003-02.7735
11	58-38.6025	003-02.2930
12	58-38.6455	003-04.4330
01	58-44.1039	003-03.2079

**Table 1: Survey Area coordinates**

## Vessels

Name: Cerys Line  
 Length: 26.2m  
 Breadth: 6.0m  
 Draft: 2.1m  
 Call sign: MGMMR5



**Figure 4: Vessel Cerys Line**

Name: FPV Morven  
 Length: 20m  
 Breadth: 6m  
 Draft: 2m  
 Call sign: MBFQ6



**Figure 5: Vessel Morven**



## Contact

For further information please contact Chris Briggs (Project Manager) 07932 912 553 or the A-2-Sea office 01794 830 909.