

NOTICE TO MARINERS

Notice of activities associated with operations on Beatrice Offshore Wind Farm

Date of Issue	14.10.2019	Notice Number	NTM-BE-00001
---------------	------------	---------------	--------------

BOWL Foundation and Seabed Survey

1. Contact Details for Marine Coordination and Fisheries Liaison

The following contact can provide more information if required:

Telephone Number (Day Operations)	+44 (0) 3302 020329
Emergency Contact (24/7)	+44 (0) 7342 028207
Email for Marine Coordinator	MC.Bowl@sse.com
Address	Grey Coast Building Harbour Quay WICK Caithness KW1 5EN

For all fisheries enquiries, the following is the primary contact:

Telephone Number	+44 (0) 1379872148
Mobile number	+44 (0) 7519106002
Email	jen.miller@brownmay.com
Address	Brown and May Marine Progress Way Mid Suffolk Business Park Eye, Suffolk IP23 7HU

2. Area of Planned Activity.

Surveys will take place within the BOWL site on selected WTG foundations, both Offshore Transmission Modules, selected inter array cable routes and selected export cable routes. Coordinates of the WTG's and OTM's to be surveyed are given in Table 1 below, inter array cable routes to be surveyed are listed in Table 2. Export Cable routes to be surveyed are listed in Table 3. A visual representation of the locations is provided in Figure 1. Works are due to commence on the 16th of October and may last up to five weeks weather conditions dependant.

NOTICE TO MARINERS

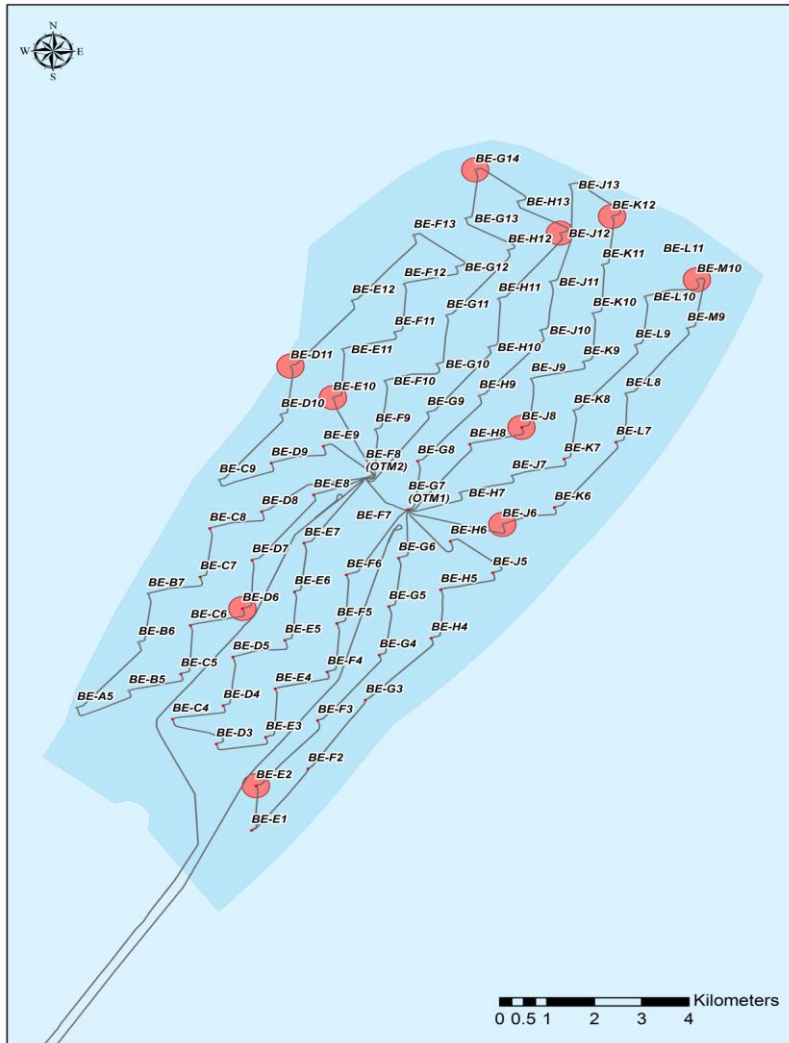


Figure 1. WTG locations for survey work

Table 1 – WTG positions

ID	Latitude	Longitude
D06	58° 14.616' N	002° 53.251' W
D11	58° 14.606' N	002° 53.258' W
E02	58° 14.616' N	002° 53.251' W
E10	58° 14.437' N	002° 53.360' W
J06	58° 14.369' N	002° 53.402' W
J08	58° 14.270' N	002° 53.462' W
J12	58° 14.249' N	002° 53.475' W
J13	58° 14.211' N	002° 53.498' W
K12	58° 14.148' N	002° 53.536' W
M10	58° 14.098' N	002° 53.566' W
OTM1	58° 13.951' N	002° 53.656' W
OTM2	58° 13.933' N	002° 53.667' W

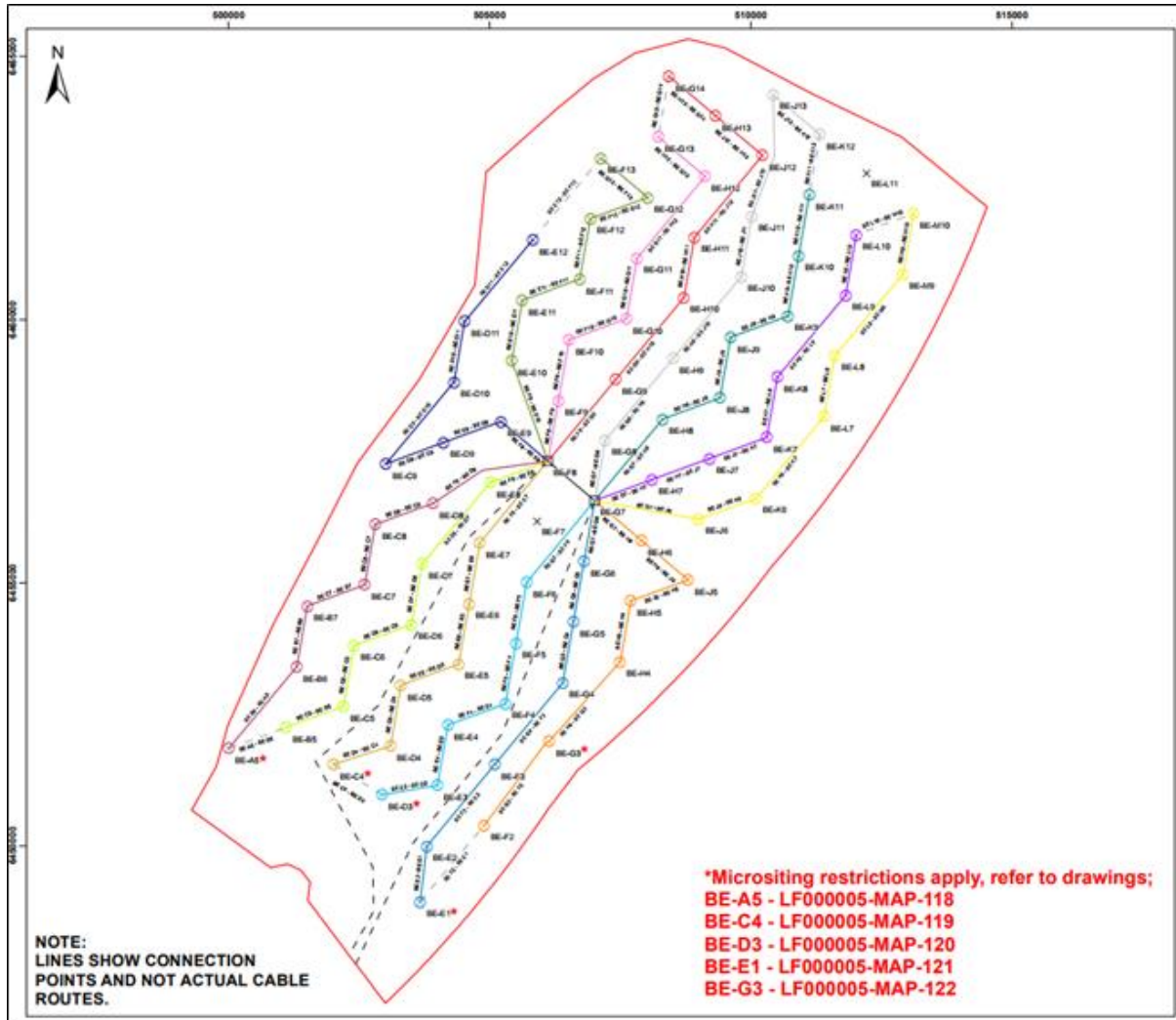


Fig 2. Inter Array cable routes

Table 2 – Inter Array cable routes.

Cable	String	KP1 (km)	KP2 (km)	Range (m)
H06-J05	Amber	0.06	1.51	1450
G07-G06	Blue	0.03	1.2	1170
H11-J12	Red	0.39	2.03	1640
J12-H13	Red	0.15	0.81	660
J13-K12	Silver	0.08	1.43	1350
H08-J08	Teal	0.67	1.08	410
J09-K09	Teal	0.01	1.29	1280
K08-L09	Violet	1.06	1.92	860
L09-L10	Violet	0.4	0.98	580
J06-K06	Yellow	0.03	1.21	1180
K06-L07	Yellow	0.25	2.5	2250
L08-M09	Yellow	0.06	0.97	910
L10-M10	Yellow	0.03	0.54	510

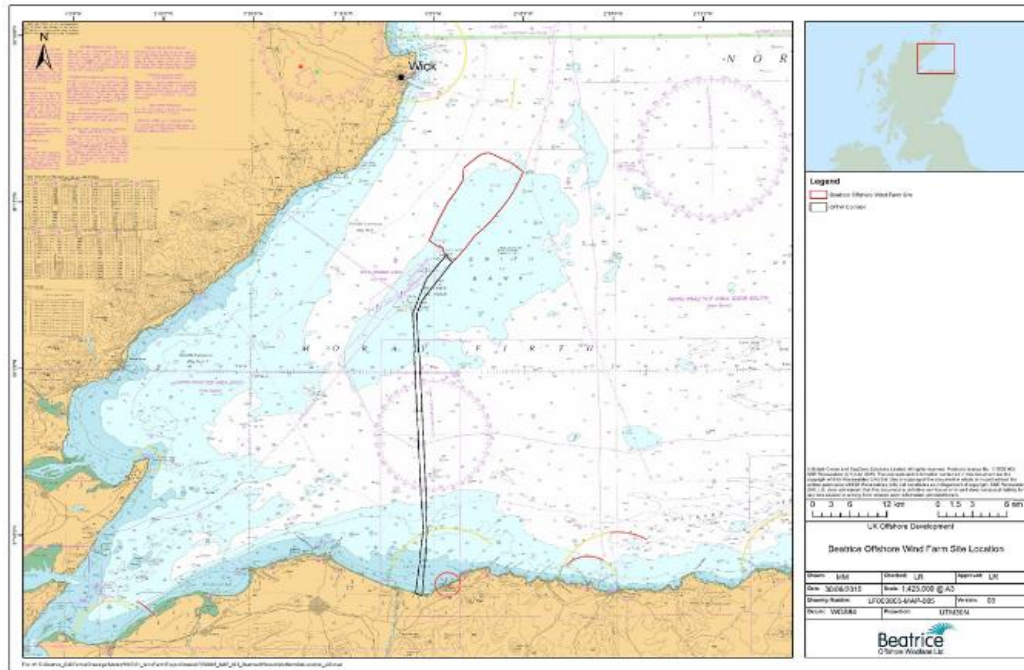


Fig 3. – Export cables Route.

Table 3 – Export cable routes.

Cable	Description	Route KP	Length (m)	Depth (m)
EC1	Backhoe trench	3.8 to 4.5	700	10.5 -12
EC1	Boulder area	4.5 to 10.7	3100	12-32
EC1	Mid route joint	33.2 to 34.7	1500	51
EC1	Rock placement area	39.0 to 39.2	200	52
EC1	Rock placement area	63.0 to 64.5	1540	38
EC1	Rock placement area	65.7 to 67.2	1500	38
EC2	Backhoe trench	3.8 to 4.5	750	11-15
EC2	Boulder area	4.5 to 10.7	3100	15-32
EC2	Mid route joint	32.5 to 34.0	1500	51
EC3	Mid route joint	1.0 to 1.25	250	45

3. Activity Description.

On behalf of BOWL, Fugro N.V. will conduct surveys of 10 wind turbine generators and both Offshore Transmission Modules listed in Table 1, 12 inter-array cables listed in Table 2 and sections of Export Cables 1 and 2 listed in Table 3.

NOTICE TO MARINERS

4. Vessel associated with this activity.

Fugro Frontier	
General Description and Dimensions:	Survey Vessel – 54 x 12.5 m
Call Sign:	C6BH4
MMSI:	311000263
Onshore Representative:	Beatrice Offshore Windfarm Grey Coast Building Harbour Quay WICK Caithness, KW1 5EN Caroline Carslaw – 07469 411955 Caroline.carslaw@sse.com



5. General Safety Advice

All vessels engaged in the construction activity will exhibit appropriate lights and shapes prescribed by the International Regulations for Preventing Collisions at Sea; relative to their operations. All vessels engaged in the activity will also transmit an Automatic Identification System (AIS) message.

Use of Safety Zones within the Beatrice Offshore Windfarm Area:

The Secretary of State for Business, Energy and Industrial Strategy (BEIS) has approved the use of safety zones under the Energy Act 2004 for the installation of wind turbines and offshore transformer module foundations/substructures within the Beatrice Offshore Windfarm. The approval was granted on the 17th March 2017.

The Secretary of State has declared Safety Zones under the following terms: During Operations and Maintenance

NOTICE TO MARINERS



- 500 metres radius around each wind turbine, offshore transformer module and/or their substructures and foundations comprising the Beatrice Offshore Wind Farm whilst work is being performed as indicated by the presence of maintenance vessels.

- It is noted that the 500 metre safety zones will roll with the maintenance activity with no more than two maintenance vessels working at any one time. Vessels are advised that anchors associated with the maintenance vessels may extend outside of the 500 metre safety zone.

Only vessels associated with the Beatrice Offshore Wind Farm Operations and Maintenance may enter statutory Safety Zones with prior permission.

Marine Coordination centre will be responsible for monitoring and policing the Safety Zones; and can be contacted directly for advice.

Further information on the application of Safety Zones can be obtained from the Marine Coordinator. Users are advised to keep clear of maintenance activities, including Safety Zones, within the Beatrice Offshore Windfarm area in line with Marine Guidance Note 372.

ALL VESSELS ARE REQUESTED to give all maintenance vessels a wide berth.

MARINERS ARE REMINDED to navigate with caution and keep continued watch on VHF Ch. 70 / 16 when navigating the area.

6. Fisheries Liaison

Fisheries liaison associated with the activity will be co-ordinated by Brown and May Marine. For any commercial fishery queries please contact:

Jen Hilton-Miller Tel + 44 (0)1379 872144 Mobile +44 (0)7519 106002 jen.miller@brownmay.com

7. Distribution List

The distribution of this notice is as per email recipient's header. A central list of recipients is maintained by the Marine Coordinator; if you are not the appropriate recipient of these notices, or do not wish to receive the notices in the future, please contact us at the address included in Section 1 of this notice.

A copy of this notice can also be found at <https://www.beatricewind.com/>